

Fortinet.NSE5_FMG-6.2.v2022-03-28.q46

Exam Code:	NSE5_FMG-6.2
Exam Name:	Fortinet NSE 5 - FortiManager 6.2
Certification Provider:	Fortinet
Free Question Number:	46
Version:	v2022-03-28
# of views:	1424
# of Questions views:	460
https://www.exam-tests.com/NSE5_FMG-6.2-exam/Fortinet.NSE5_FMG-6.2.v2022-03-28.q46.html	

NEW QUESTION: 1

An administrator has added all the devices in a Security Fabric group to FortiManager. How does the administrator identify the root FortiGate?

- A. By a dollar symbol (\$) at the end of the device name
- B. By a Question mark (?) at the end of the device name
- C. By an Asterisk (*) at the end of the device name
- D. By an at symbol (@) at the end of the device name

Answer: ([SHOW ANSWER](#))

NEW QUESTION: 2

Which ports are commonly used by FortiManager? (Choose two.)

- A. TCP 514 for remote management of a FortiGate unit.
- B. TCP 703 HA heartbeat or synchronization (FortiManager HA cluster).
- C. TCP 541 for remote management of a FortiGate unit.
- D. TCP 5199 HA heartbeat or synchronization (FortiManager HA cluster).

Answer: A,B ([LEAVE A REPLY](#))

NEW QUESTION: 3

Refer to the exhibit. Given the configurations shown in the exhibit, what can you conclude from the installation targets in the Install On column?

The screenshot displays the FortiManager interface with three main sections:

- Managed FortiGate devices:** A list of devices including Local-FortiGate, Remote-FortiGate, root [NAT] (Management), Student [NAT], and Trainer [NAT].
- Installation targets:** A list of targets including Remote-FortiGate, root [NAT] (Management), Student [NAT], and Local-FortiGate.
- Policy Package:** A table showing the configuration for three policies. The 'Install On' column indicates which devices and VDOMs each policy is installed on.

Seq.#	Install On	Name	From	To
1	Remote-FortiGate (Student) Local-FortiGate (root)	Ping_Access	port3	port1
2	Remote-FortiGate (Student)	Web	port3	port1
3	Installation Targets	Source Device	port3	port1

- A. Policy seq.# 3 will be installed on the Trainer[NAT] VDOM only.
- B. Policy seq.# 3 will be installed on all managed devices and VDOMs that are listed under Installation Targets.
- C. Policy seq.# 3 will not be installed on any managed device.
- D. The Install On column value represents successful installations on the managed devices.

Answer: B (LEAVE A REPLY)

NEW QUESTION: 4

Refer to the exhibits. An administrator created a new system template named Training with two new DNS addresses on FortiManager. During the installation preview stage, the administrator notices that many unset commands need to be pushed.

Device Manager Device & Groups Firmware License Provisioning Templates Scripts SD-WAN

Save Install Wizard

System Templates (2)
- default
- Training
Threat Weight
Certificate Templates

DNS

Primary DNS Server 192.168.1.111
Secondary DNS Server 192.168.1.112
Local Domain Name

Apply

Alert Email

SMTP Server
Authentication Enable
SMTP User
Password

Apply

SNMP

SNMP Agent Enable

SNMP v1/v2c

+ Create New Edit View Delete

Community Name	Queries	Traps
<		>

SNMP v3

+ Create New Edit View Delete

User Name	Queries	Traps	Security Level
<			>

Apply

NTP Server

Synchronize with NTP

Admin Settings

HTTP Port
HTTPS Port
SSH Port
SSH v1 compatibility
Idle Timeout
Enable SCP
Switch Controller

View Settings

Language
Lines per page
Theme
IPv6 Support on GUI

Replacement Message

Edit Reset

Name
Administration (0)
Alert Email (0)
Authentication (0)
Device Detection
Event (0)

Install Preview

Virtual Domain:

global, root

```
config system ntp
unset ntpsync
end
config system email-server
unset server
unset security
end
config log fortianalyzer setting
unset status
unset server
unset upload-option
unset reliable
unset serial
end
config system central-management
config server-list
purge
end
end
config system global
unset admintimeout
unset admin-https-redirect
end
config system dns
set primary 192.168.1.111
set secondary 192.168.1.112
end
config system snmp sysinfo
```

FORTINET

Download

Close

What can be the main reason for these unset commands?

- A. The Training system template has other default settings
- B. The DNS addresses in the default system settings are the same as the Training system template
- C. The ADOM is locked by another administrator
- D. The Training system template does not have assigned devices

Answer: A (LEAVE A REPLY)

NEW QUESTION: 5

View the following exhibit.

Starting Log (Run the device)

Start installing

```
.ocal-FortiGate $ config user device
.ocal-FortiGate (device) $ edit "mydevice"
New entry 'mydevice' added
.ocal-FortiGate (mydevice) $ next
MAC address can not be 0
Node_check_object fail!for mac 00:00:00:00:00:00
Attribute 'mac' value '00:00:00:00:00:00' checkingfail -33
Command fail. Return code 1
.ocal-FortiGate (device) $ end
..
.ocal-FortiGate $ config firewall policy
.ocal-FortiGate (policy) $ edit 2
New entry '2' added
.ocal-FortiGate (2) $ set name "Device_policy"
.ocal-FortiGate (2) $ set uuid 64...
.ocal-FortiGate (2) $ set srcintf "port3"
.ocal-FortiGate (2) $ set dstintf "port1"
.ocal-FortiGate (2) $ set srcaddr "all"
.ocal-FortiGate (2) $ set dstaddr "all"
.ocal-FortiGate (2) $ set action accept
.ocal-FortiGate (2) $ set schedule "always"
.ocal-FortiGate (2) $ set service "ALL"
.ocal-FortiGate (2) $ set devices "mydevice"
Entry not found in datasource
Value parse error before 'mydevice'
Command fail. Return code -3
.ocal-FortiGate (2) $ set nat enable
.ocal-FortiGate (2) $ next
.ocal-FortiGate (policy) $ end
..
```

Which statement is true regarding this failed installation log?

- A. Policy ID 2 will not be installed
- B. Policy ID 2 is installed in disabled state
- C. Policy ID 2 is installed without a source device
- D. Policy ID 2 is installed without a source address

Answer: C ([LEAVE A REPLY](#))

NEW QUESTION: 6

An administrator would like to create an SD-WAN default static route for a newly created SD-WAN using the FortiManager GUI.

Both port1 and port2 are part of the SD-WAN member interfaces. Which interface must the administrator select in the static route device drop-down list?

- A. port2
- B. virtual-wan-link

- C. port1
- D. auto-discovery

Answer: ([SHOW ANSWER](#))

NEW QUESTION: 7

Refer to the exhibit.



An administrator logs into the FortiManager GUI and sees the panes shown in the exhibit. Which two reasons can explain why the FortiAnalyzer feature panes do not appear? (Choose two.)

- A. The administrator logged in using the unsecure protocol HTTP, so the view is restricted.
- B. FortiAnalyzer features are not enabled on FortiManager.
- C. The administrator IP address is not a part of the trusted hosts configured on FortiManager interfaces.
- D. The administrator profile does not have full access privileges like the Super_User profile.

Answer: B,C ([LEAVE A REPLY](#))

NEW QUESTION: 8

When statement correct compares FortiManager physical and virtual appliances?

- A. Physical and virtual FortiManager appliances may manage unlimited devices and have unrestricted storage.
- B. Physical and virtual FortiManager appliances have an unrestricted daily logging rate.
- C. Physical and virtual FortiManager appliances use model types and licenses respectively, to differentiate managed device and storage capacity limits.
- D. Physical and virtual FortiManager appliances use licenses to increase managed device and storage capacity limits.

Answer: C ([LEAVE A REPLY](#))

NEW QUESTION: 9

View the following exhibit.

The screenshot displays the FortiManager interface with the following components:

- Device Manager:** Shows 4 Managed FortiGate devices. The list includes Local-FortiGate, Remote-FortiGate, root [NAT] (Management), Student[NAT], and Trainer [NAT]. A callout box labeled "Managed FortiGate devices" points to this list.
- Policy Packages:** Shows a list of installation targets: Installation Target, Remote-FortiGate, root [NAT][Management], Student[NAT], and Local-PortiGate. A callout box labeled "Installation targets" points to this list.
- Policy Package Configuration:** A table showing the configuration for three policy packages. A callout box labeled "Policy Package" points to this table.

Seq.#	Install On	Name	From	To
1	<input checked="" type="checkbox"/> Remote-FortiGate(Student)	Ping_Access	port3	port1
2	<input checked="" type="checkbox"/> Local-FortiGate(root)	Web	port3	port1
3	<input checked="" type="checkbox"/> Installation Targets	Source_Device	port3	port1

Which one of the following statements is true regarding installation targets in use Install On column?

- A. Policy seq=3 will be installed on all managed devices and VDOMs that are listed under Installation Targets
- B. Policy seq=3 will be not installed on any managed device
- C. The Install On column value represents successful installation on the managed devices
- D. Policy seq=3 will be installed on the Trainer[NAT] VDOM only

Answer: A (LEAVE A REPLY)

NEW QUESTION: 10

Which two statements about Security Fabric integration with FortiManager are true? (Choose two.)

- A. The Security Fabric license, group name and password are required for the FortiManager Security Fabric integration
- B. The Fabric View module enables you to generate the Security Fabric ratings for Security Fabric devices
- C. The Security Fabric settings are part of the device level settings

D. The Fabric View module enables you to view the Security Fabric ratings for Security Fabric devices

Answer: C,D ([LEAVE A REPLY](#))

NEW QUESTION: 11

When configuring FortiGuard on FortiManger. Which two statements are correct regarding Allow Push Update settings configured in the FortiGuard. Antivirus and IPS Settings? (Choose two)

A. FortiManager's built-in FDS service may not correctly receive push updates if the external facing IP address of any intermediary NAT device is dynamic.

B. If an urgent or critical FortiGuard Antivirus and/or IPS update becomes available, the FortiManger built-in FDS will send push update notifications.

C. If an urgent or critical FortiGuard Antivirus and/or IPS update becomes available, the FortiManger built-in FDS will send push update notifications to each managed device.

D. FortiManager's built-in FDS service does not allow an administrator to override the default FortiManger IP address and port used by the FDN to send update messages.

Answer: A,B ([LEAVE A REPLY](#))

NEW QUESTION: 12

As a result of enabling FortiAnalyzer features on FortiManager, which of the following statements is true?

A. FortiManager can be used only as a logging device.

B. FortiManager will reboot

C. FortiManager will enable ADOMs automatically to collect logs from non-FortiGate devices

D. FortiManager will send the logging configuration to the managed devices so the managed devices will start sending logs to FortiManager

Answer: B ([LEAVE A REPLY](#))

NEW QUESTION: 13

Refer to the exhibit. An administrator has created a firewall address object which is used in multiple policy packages for multiple FortiGate devices in an ADOM.

Edit Address

Address Name

Type

IP/Netmask

Interface

Static Route Configuration

Comments

Add to Groups

Advanced Options >

Per-Device Mapping

+ Add Edit Delete

<input type="checkbox"/>	Name	VDOM	Details
<input type="checkbox"/>	Remote-FortiGate	root	IP/Netmask:10.200.1.0/255.255.255.0

When the installation operation is performed, which IP/Netmask will be installed on managed devices for this firewall address object?

- A. If no dynamic mapping is defined for other FortiGate devices, the object will not be installed
- B. The FortiManager administrator can choose the value for the firewall address object in the Install Wizard for Remote-FortiGate
- C. 10.200.1.0/24 on Remote-FortiGate
- D. 192.168.0.1/24 on Remote-FortiGate

Answer: ([SHOW ANSWER](#))

NEW QUESTION: 14

Refer to the exhibit.

```
config system dm
set rollback-allow-reboot enable
end
```

An administrator has configured the command shown in the exhibit on FortiManager. A configuration change has been installed from FortiManager to the managed FortiGate that causes the FGFM tunnel to go down for more than 15 minutes.

What is the purpose of this command?

- A. It allows FortiGate to unset central management settings.
- B. It allows FortiGate to reboot and recover the previous configuration from its configuration file.

C. It allows the FortiManager to revert and install a previous configuration revision on the managed FortiGate.

D. It allows FortiGate to reboot and restore a previously working firmware image.

Answer: (SHOW ANSWER)

Explanation/Reference:

Reference: <https://docs.fortinet.com/document/fortimanager/6.2.0/fortigate-fortimanager-communications-protocol-guide/141304/fgfm-recovery-logic>

NEW QUESTION: 15

You are moving managed FortiGate devices from one ADOM to a new ADOM.

Which statement correctly describes the expected result?

A. The shared policy package will not be moved to the new ADOM

B. Any pending device settings will be installed automatically

C. Policy packages will be imported into the new ADOM automatically

D. Any unused objects from a previous ADOM are moved to the new ADOM automatically

Answer: C (LEAVE A REPLY)

NEW QUESTION: 16

Which of the following items does an FGFM keepalive message include? (Choose two.)

A. FortiGate uptime

B. FortiGate license information

C. FortiGate IPS version

D. FortiGate configuration checksum

Answer: B,D (LEAVE A REPLY)

FGFM Keepalive Messages configured on FortiManager. Only FortiGate sends a keepalive message to FortiManager, regardless of which device established the FGFM tunnel. FortiGate also sends a configuration checksum to confirm synchronization as a part of keepalive.

Valid NSE5_FMG-6.2 Dumps shared by BraindumpsPass.com for Helping Passing NSE5_FMG-6.2 Exam! BraindumpsPass.com now offer the **newest NSE5_FMG-6.2 exam dumps**, the BraindumpsPass.com NSE5_FMG-6.2 exam **questions have been updated** and **answers have been corrected** get the **newest** BraindumpsPass.com NSE5_FMG-6.2 dumps with Test Engine here: https://www.braindumpsPass.com/Fortinet/NSE5_FMG-6.2-practice-exam-dumps.html (85 Q&As Dumps, **40%OFF Special Discount: Exam-Tests**)

NEW QUESTION: 17

An administrator has assigned a global policy package to a new ADOM called ADOM1. What will happen if the administrator tries to create a new policy package in ADOM1?

- A.** When a new policy package is created, the administrator must assign the global policy package from the global ADOM.
- B.** When creating a new policy package, the administrator can select the option to assign the global policy package to the new policy package
- C.** When the new policy package is created, FortiManager automatically assigns the global policy package to the new policy package.
- D.** When a new policy package is created, the administrator needs to reapply the global policy package to ADOM1.

Answer: C (LEAVE A REPLY)

NEW QUESTION: 18

An administrator's PC crashes before the administrator can submit a workflow session for approval. After the PC is restarted, the administrator notices that the ADOM was locked from the session before the crash.

How can the administrator unlock the ADOM?

- A.** Log in using the same administrator account to unlock the ADOM.
- B.** Restore the configuration from a previous backup.
- C.** Log in as Super_User in order to unlock the ADOM.
- D.** Delete the previous admin session manually through the FortiManager GUI or CLI.

Answer: A (LEAVE A REPLY)

NEW QUESTION: 19

View the following exhibit. Which statement is true regarding this failed installation log?

Starting Log (Run the device)

Start installing

Local-FortiGate \$ config user device

Local-FortiGate (device) \$ edit "mydevice"

new entry 'mydevice' added

Local-FortiGate (mydevice) \$ next

MAC address can not be 0

Node_check_object fail!for mac 00:00:00:00:00:00

Attribute 'mac' value '00:00:00:00:00:00' checkingfail -33

Command fail. Return code 1

Local-FortiGate (device) \$ end

...

Local-FortiGate \$ config firewall policy

Local-FortiGate (policy) \$ edit 2

New entry '2' added

Local-FortiGate (2) \$ set name "Device_policy"

Local-FortiGate (2) \$ set uuid 64...

Local-FortiGate (2) \$ set srcintf "port3"

Local-FortiGate (2) \$ set dstintf "port1"

Local-FortiGate (2) \$ set srcaddr "all"

Local-FortiGate (2) \$ set dstaddr "all"

Local-FortiGate (2) \$ set action accept

Local-FortiGate (2) \$ set schedule "always"

Local-FortiGate (2) \$ set service "ALL"

Local-FortiGate (2) \$ set devices "mydevice"

Entry not found in datasource

Value parse error before 'mydevice'

Command fail. Return code -3

Local-FortiGate (2) \$ set nat enable

Local-FortiGate (2) \$ next

Local-FortiGate (policy) \$ end

...

A. Policy ID 2 is installed without a source address

- B. Policy ID 2 will not be installed
- C. Policy ID 2 is installed in disabled state
- D. Policy ID 2 is installed without a source device

Answer: D (LEAVE A REPLY)

Confirmed on FortiGate using CLI cmds above. The policy created above will be created and shows up in the "IPv4 Policy" section (so it is enabled), but does not have a device listed as the source device.

NEW QUESTION: 20

What will be the result of reverting to a previous revision version in the revision history?

- A. It will modify the device-level database
- B. It will generate a new version ID and remove all other revision history versions
- C. It will tag the device settings status as Auto-Update
- D. It will install configuration changes to managed device automatically

Answer: (SHOW ANSWER)

NEW QUESTION: 21

Which two statements regarding device management on FortiManager are true? (Choose two.)

- A. FortiGate devices in HA cluster devices are counted as a single device.
- B. FortiGate in transparent mode configurations are not counted toward the device count on FortiManager.
- C. FortiGate devices in an HA cluster that has five VDOMs are counted as five separate devices.
- D. The maximum number of managed devices for each ADOM is 500.

Answer: A,C (LEAVE A REPLY)

NEW QUESTION: 22

An administrator with the Super_User profile is unable to log in to FortiManager because of an authentication failure message.

Which troubleshooting step should you take to resolve the issue?

- A. Make sure the administrator IP address is part of the trusted hosts.
- B. Make sure Offline Mode is disabled
- C. Make sure ADOMs are enabled and the administrator has access to the Global ADOM
- D. Make sure FortiManager Access is enabled in the administrator profile

Answer: A (LEAVE A REPLY)

NEW QUESTION: 23

An administrator run the reload failure command: diagnose test deploymanager reload config <deviceid> on FortiManager. What does this command do?

- A. It downloads the latest configuration from the specified FortiGate and performs a reload operation on the device database.
- B. It installs the provisioning template configuration on the specified FortiGate.

C. It installs the latest configuration on the specified FortiGate and update the revision history database.

D. It compares and provides differences in configuration on FortiManager with the current running configuration of the specified FortiGate.

Answer: A ([LEAVE A REPLY](#))

NEW QUESTION: 24

Which two items does an FGFM keepalive message include? (Choose two.)

A. FortiGate uptime

B. FortiGate configuration checksum

C. FortiGate license information

D. FortiGate IPS version

Answer: B,D ([LEAVE A REPLY](#))

NEW QUESTION: 25

Which of the following are FortiManager features? (Choose two)

A. Administrative Domains

B. Virtual Domains

C. Centralized Management

D. Cloud-based Management

Answer: A,C ([LEAVE A REPLY](#))

Explanation

NEW QUESTION: 26

What does a policy package status of Modified indicate?

A. FortiManager is unable to determine the policy package status

B. The policy package was never imported after a device was registered on FortiManager

C. Policy configuration has been changed on a managed device and changes have not yet been imported into FortiManager

D. Policy package configuration has been changed on FortiManager and changes have not yet been installed on the managed device.

Answer: D ([LEAVE A REPLY](#))

http://help.fortinet.com/fmgr/50hlp/56/5-6-1/FortiManager_Admin_Guide/1200_Policy%20and%20Objects/0800_Managing%20policy%20packages/2200_Policy%20Package%20Installation%20targets.htm

NEW QUESTION: 27

Which two statements are correct for configuration changes made by FortiManager scripts? (Choose two)

A. When run on the device database, you can install changes to the managed FortiGate devices using the installation wizard.

B. When run on the device database, changes are automatically installed to the managed FortiGate devices.

C. When run on managed devices directly, changes are automatically installed to the managed FortiGate devices.

D. When run on managed devices directly, you can install changes to the managed FortiGate devices using the installation wizard.

Answer: A,C (LEAVE A REPLY)

A script can make many changes to a managed device and are useful for bulk configuration changes and consistency across multiple managed devices. Scripts can be run in three different ways:

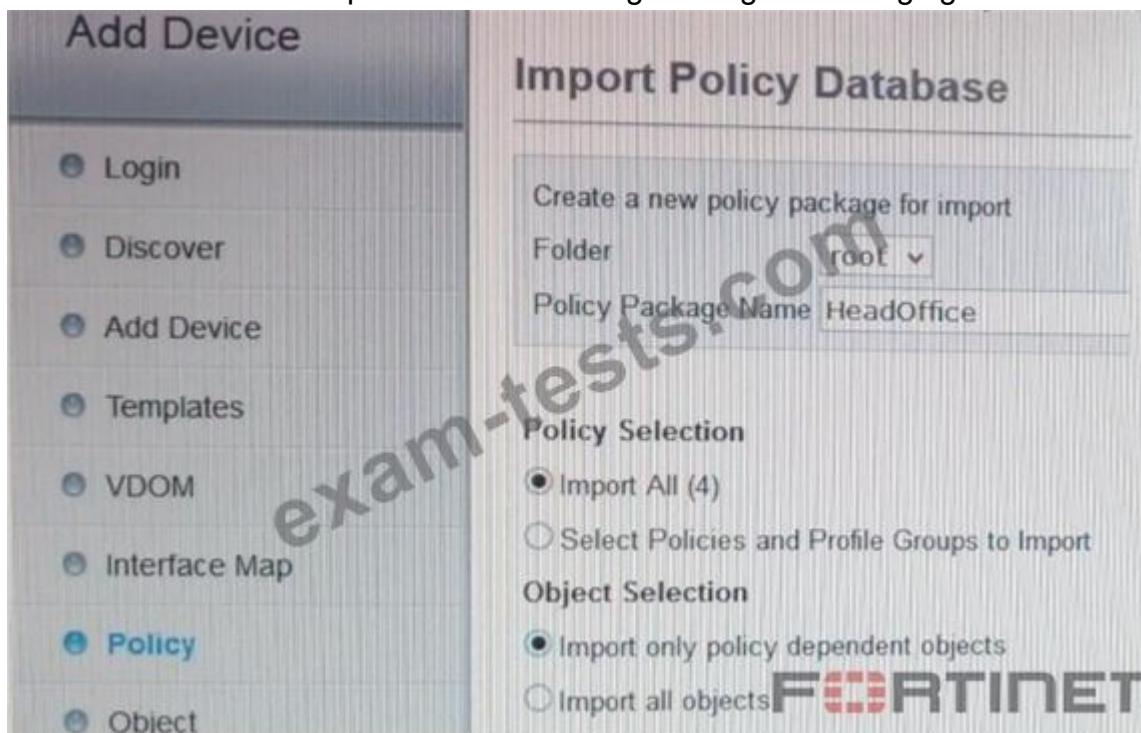
Device Database: By default, a script can be executed on the device database. It is recommended you run the changes on the device database (default setting), as this allows you to check what configuration changes you will send to the managed device. Once scripts are run on the device database you can then install these changes to a managed device using the installation wizard.

Policy Package, ADOM database: A script can be run here to create ADOM level objects that will be applied to your managed devices and can then be installed using the installation wizard.

Remote FortiGate Directly (via CLI): A script can be executed directly on the device and you don't need to install these changes using the installation wizard. As the changes are directly installed on the managed device, no option is provided to verify and check the configuration changes through FortiManager.

NEW QUESTION: 28

A FortiGate device is imported to FortiManager using the settings given in the exhibit.



An administrator subsequently modifies and installs the policy package.

Which two statements are correct regarding the scenario? (Choose two)

- A. The orphan (unused) objects that are not tied to policies locally on the FortiGate will be deleted on install.
- B. The orphan (unused) objects that are not tied to policies locally on the FortiGate will not be deleted on install.
- C. The FortiManager imported all unused objects to the ADOM object database. These objects can be used by referencing in the policies on FortiManager and installing to the managed devices.
- D. The FortiManager did not import unused objects to the ADOM object database. These objects cannot be used by referencing in the policies on FortiManager and installing to the managed devices.

Answer: A,D ([LEAVE A REPLY](#))

NEW QUESTION: 29

In addition to the default ADOMs, an administrator has created a new ADOM named Training for FortiGate devices.

The administrator sent a device registration to FortiManager from a remote FortiGate. Which one of the following statements is true?

- A. The FortiGate will be automatically added to the Training ADOM.
- B. The FortiGate will be added automatically to the default ADOM named FortiGate.
- C. The FortiManager administrator must add the unregistered device manually to the unregistered device manually to the Training ADOM using the Add Device wizard
- D. By default, the unregistered FortiGate will appear in the root ADOM.

Answer: D ([LEAVE A REPLY](#))

NEW QUESTION: 30

View the following exhibit:

```
#diagnose fmupdate view-serverlist fds
Fortiguard Server Comm: Enabled
Server Override Mode: Loose
FDS server list :
Index Address          Port    TimeZone Distance  Source
-----
*0   10.0.1.50             8890   -5         0         CLI
1    96.45.33.89           443    -5         0         FDNI
2    96.45.32.81           443    -5         0         FDNI
...
38   fds1.fortinet.com     443    -5         0         DEFAULT
```

How will FortiManager try to get updates for antivirus and IPS?

- A. From the default server fds1.fortinet.com
- B. From the configured override server list only

- C. From the list of configured override servers with ability to fall back to public FDN servers
- D. From public FDN server with highest index number only

Answer: ([SHOW ANSWER](#))

NEW QUESTION: 31

Refer to the following exhibit:

```
config system global
set workspace-mode normal
end
```

Which of the following statements are true based on this configuration? (Choose two.)

- A. The same administrator can lock more than one ADOM at the same time
- B. Ungraceful closed sessions will keep the ADOM in a locked state until the administrator session times out
- C. Unlocking an ADOM will submit configuration changes automatically to the approval administrator
- D. Unlocking an ADOM will install configuration automatically on managed devices

Answer: A,B ([LEAVE A REPLY](#))

To enable ADOM locking and disable concurrent ADOM access:

```
config system global
set workspace-mode normal
end
```

Reference: http://help.fortinet.com/fmgr/cli/5-6-2/Document/0800_ADOMs/200_Configuring+.htm

Valid NSE5_FMG-6.2 Dumps shared by BraindumpsPass.com for Helping Passing NSE5_FMG-6.2 Exam! BraindumpsPass.com now offer the **newest NSE5_FMG-6.2 exam dumps**, the BraindumpsPass.com NSE5_FMG-6.2 exam **questions have been updated** and **answers have been corrected** get the **newest** BraindumpsPass.com NSE5_FMG-6.2 dumps with Test Engine here: https://www.braindumpsPass.com/Fortinet/NSE5_FMG-6.2-practice-exam-dumps.html (85 Q&As Dumps, **40%OFF Special Discount: Exam-Tests**)

NEW QUESTION: 32

An administrator would like to create an SD-WAN default static route for a newly created SD-WAN using the FortiManager GUI. Both port1 and port2 are part of the SD-WAN member interfaces.

Which interface must the administrator select in the static route device drop-down list?

- A. auto-discovery
- B. port2
- C. port1
- D. virtual-wan-link

Answer: D ([LEAVE A REPLY](#))

NEW QUESTION: 33

View the following exhibit.



Based on the configuration setting, which one of the following statements is true?

- A. The setting disables concurrent ADOM access and adds ADOM locking
- B. This setting allows you to assign different VDOMs from the same FortiGate to different ADOMs.
- C. The setting allows automatic updates to the policy package configuration for a managed device
- D. The setting enables the ADOMs feature on FortiManager

Answer: B ([LEAVE A REPLY](#))

NEW QUESTION: 34

What is the purpose of the Policy Check feature on FortiManager?

- A. To find and provide recommendation to combine multiple separate policy packages into one common policy package
- B. To find and merge duplicate policies in the policy package
- C. To find and provide recommendation for optimizing policies in a policy package
- D. To find and delete disabled firewall policies in the policy package

Answer: B ([LEAVE A REPLY](#))

The policy check tool allows you to check all policy packages within an ADOM to ensure consistency and eliminate conflicts that may prevent your devices from passing traffic. This allows you to optimize your policy sets and potentially reduce the size of your databases. The check will verify:

1. Object duplication: two objects that have identical definitions
2. Object shadowing: a higher priority object completely encompasses another object of the same type
3. Object overlap: one object partially overlaps another object of the same type
4. Object orphaning: an object has been defined but has not been used anywhere.

Reference: <https://docs.fortinet.com/uploaded/files/2905/FortiManager-5.4.0-Administration-Guide.pdf>

NEW QUESTION: 35

An administrator is replacing a device on FortiManager by running the following command:
execute device replace sn <devname> <serialnum>.

What device name and serial number must the administrator use?

- A. Device name and serial number of the original device.
- B. Device name and serial number of the replacement device.
- C. Device name of the replacement device and serial number of the original device.
- D. Device name of the original device and serial number of the replacement device.

Answer: (SHOW ANSWER)

Explanation/Reference:

NEW QUESTION: 36

View the following exhibit.



Which of the following statements are true if FortiManager and FortiGate are behind the NAT devices? (Choose two.)

- A. FortiGate is discovered by FortiManager through the FortiGate NATed IP address.
- B. If the FCFM tunnel is torn down, FortiManager will try to re-establish the FGFM tunnel.
- C. During discovery, the FortiManager NATed IP address is not set by default on FortiGate.
- D. FortiGate can announce itself to FortiManager only if the FortiManager IP address is configured on FortiGate under central management.

Answer: A,D (LEAVE A REPLY)

NEW QUESTION: 37

Which two items are included in the FortiManager backup? (Choose two.)

- A. FortiGuard database
- B. Global database
- C. Logs
- D. All devices

Answer: B,D (LEAVE A REPLY)

Reference:

NEW QUESTION: 38

View the following exhibit. An administrator has created a firewall address object, Training, which is used in the Local-FortiGate policy package.

When the install operation is performed, which IP Netmask will be installed on the Local-FortiGate, for the Training firewall address object?

Edit Address

Address Name

Training

Type

IP/Netmask

IP/Network

192.168.1.0/255.255.255.255.0

Interface

any

Static Route Configuration

OFF

Comments

0/255



Add to Groups

Click to add

Advanced Options >

Per-Device Mapping

ON

+ Add  Edit  Delete

<input type="checkbox"/>	Name	VDOM	Details
<input type="checkbox"/>	Local-FortiGate root	IP/Netmask	10.0.10/255.255.255.0

A. 10.0.1.0/24

- B. It will create firewall address group on Local-FortiGate with 192.168.0.1/24 and 10.0.1.0/24 object values
- C. 192.168.0.1/24
- D. Local-FortiGate will automatically choose an IP Network based on its network interface settings.

Answer: A (LEAVE A REPLY)

In the example, the dynamic address object LocalLan refers to the internal network address of the managed firewalls. The object has a default value of 192.168.1.0/24. The mapping rules are defined per device. For Remote-FortiGate, the address object LocalLan refers to 10.10.11.0/24. The devices in the ADOM that do not have dynamic mapping for LocalLan have a default value of 192.168.1.0/24.

NEW QUESTION: 39

What is the purpose of ADOM revisions?

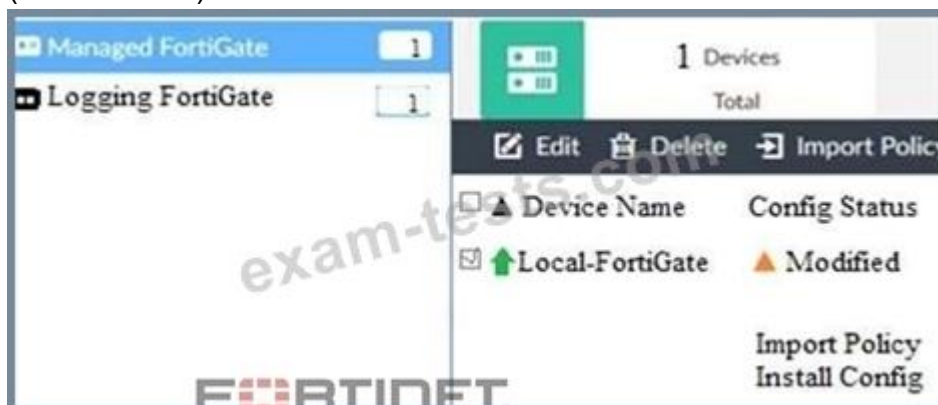
- A. To create System Checkpoints for the FortiManager configuration.
- B. To revert individual policy packages and device-level settings for a managed FortiGate by reverting to a specific ADOM revision
- C. To save the current state of the whole ADOM.
- D. To save the current state of all policy packages and objects for an ADOM.

Answer: D (LEAVE A REPLY)

NEW QUESTION: 40

View the following exhibit. When using Install Config option to install configuration changes to managed FortiGate, which of the following statements are true?

(Choose two.)



- A. Once initiated, the install process cannot be canceled and changes will be installed on the managed device
- B. Will not create new revision in the revision history
- C. Installs device-level changes to FortiGate without launching the Install Wizard
- D. Provides the option to preview configuration changes prior to installing them

Answer: A,C (LEAVE A REPLY)

The Install Config option allows you to perform a quick installation of device-level settings without launching the Install Wizard. When you use this option, you cannot preview the changes prior to committing. Administrator should be certain of the changes before using this install option, because the install can't be cancelled after the process is initiated.

NEW QUESTION: 41

An administrator would like to create an SD-WAN using central management in the Training ADOM.

To create an SD-WAN using central management, which two steps must be completed? (Choose two.)

- A. Configure and install the SD-WAN firewall policy and SD-WAN static route before installing the SD-WAN template settings
- B. Specify a gateway address when you create a default SD-WAN static route
- C. Enable SD-WAN central management in the Training ADOM
- D. Remove all the interface references such as routes or policies that will be a part of SD-WAN member interfaces

Answer: ([SHOW ANSWER](#))

NEW QUESTION: 42

Which of the following items does an FGFM keepalive message include? (Choose two.)

- A. FortiGate uptime
- B. FortiGate configuration checksum
- C. FortiGate license information
- D. FortiGate IPS version

Answer: ([SHOW ANSWER](#))

NEW QUESTION: 43

Refer to the exhibit. Review the Download Import Report.

```
Start to import config from device(Remote-FortiGate)vdom(root)to adom(MyADOM),
package(Remote-FortiGate)
"firewall address",SUCCESS,"(name=REMOTE_SUBNET,oid=580,new object)"
"firewall policy",SUCCESS,"(name=1,oid=990,new object)"
"firewall policy",FAIL,"(name=ID:2(=2),oid=991,reason=interface(interface binding
contradiction.detail:any<-port)binding fail)"
```

Why is it failing to import firewall policy ID 2?

- A. Policy ID 2 does not have ADOM Interface mapping configured on FortiManager.
- B. The address object used in policy ID 2 already exists in the ADOM database with any as the interface association, and conflicts with the address object interface association locally on FortiGate.
- C. Policy ID 2 for this managed FortiGate already exists on FortiManager in policy package named Remote-FortiGate.

D. Policy ID 2 is configured from the interface any to port6. FortiManager rejects to import this policy because the any interface does not exist on FortiManager.

Answer: B ([LEAVE A REPLY](#))

NEW QUESTION: 44

An administrator, Trainer, who is assigned the Super_User profile, is trying to approve a workflow session that was submitted by another administrator, Student. However, Trainer is unable to approve the approving a workflow session?

View Diff

<input type="checkbox"/>	ID	Name	User	Date Submitt...	Approved/To...	Comments
<input checked="" type="checkbox"/>	1	Firewall p..	Student	2017-06-01...	0/1	firewall policies

+ Add Comment

[Student] - 2017-06-01 13:31:35
firewall policies
[Student] - 2017-06-01 16:29:27

- A. Trainer does not have full rights over this ADOM
- B. Student, who submitted the workflow session, must first self-approve the request
- C. Trainer must close Student's workflow session before approving the request
- D. Trainer is not a part of workflow approval group

Answer: D ([LEAVE A REPLY](#))

NEW QUESTION: 45

An administrator has assigned a global policy package to custom ADOM1. Then the administrator creates a new policy package, Fortinet, in the custom ADOM1.

Which statement about the global policy package assignment to the newly-created policy package Fortinet is true?

- A. When a new policy package is created, you can select the option to assign the global policies to the new package.
- B. When a new policy package is created, you need to reapply the global policy package to the ADOM.
- C. When a new policy package is created, you need to assign the global policy package from the global ADOM.
- D. When a new policy package is created, it automatically assigns the global policies to the new package.

Answer: D ([LEAVE A REPLY](#))

NEW QUESTION: 46

Refer to the exhibits.

Exhibit one.

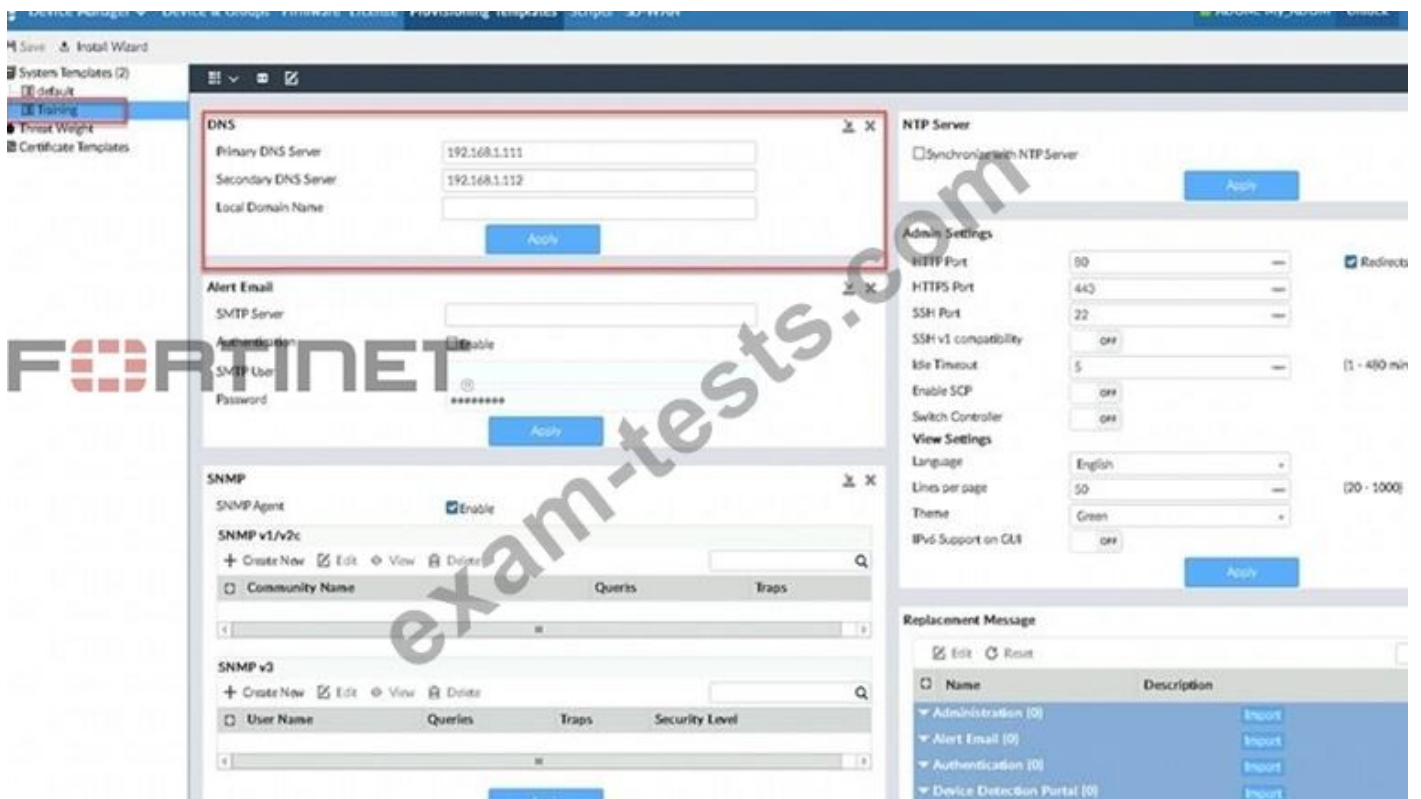
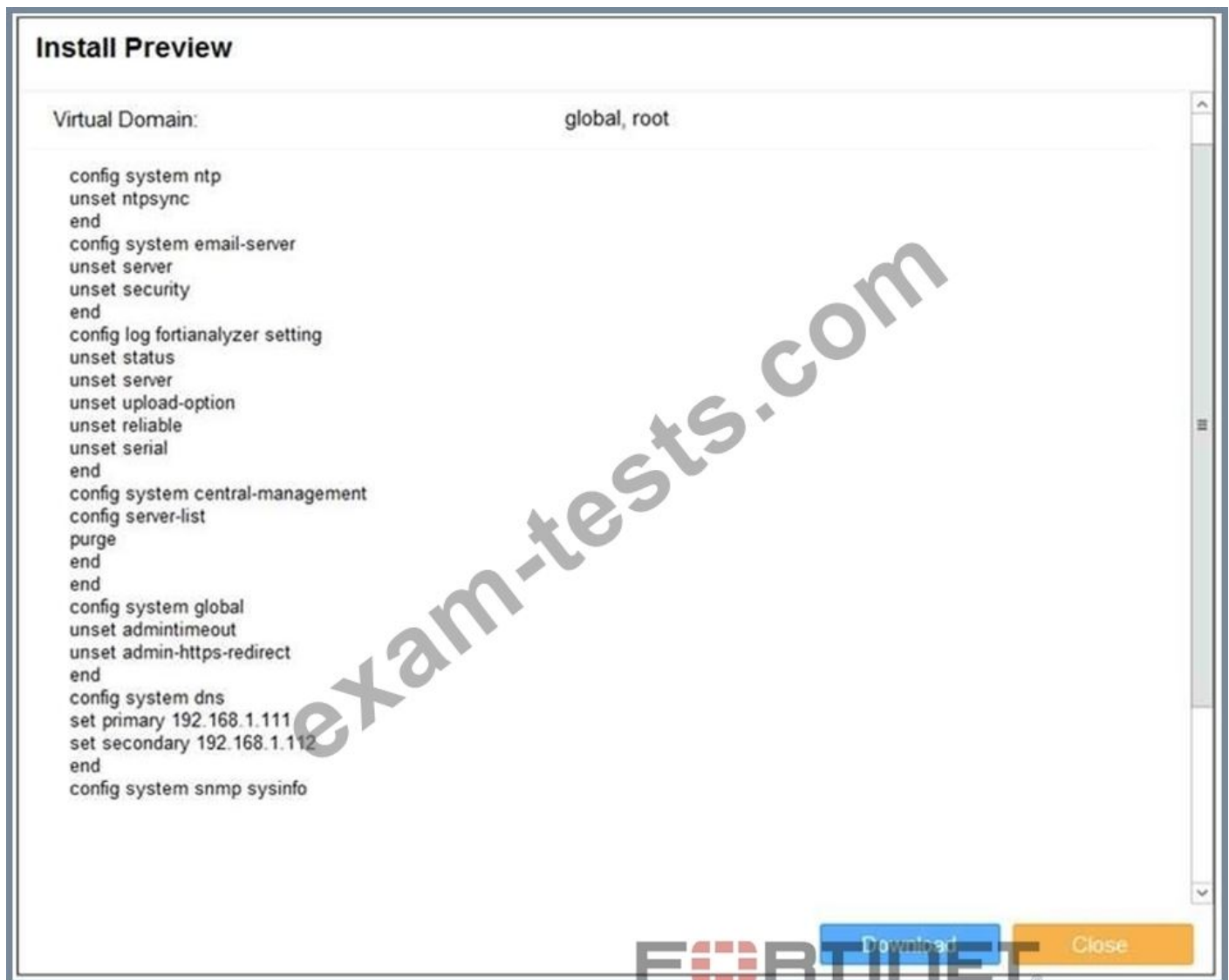


Exhibit two.



An administrator created a new system template named Training with two new DNS addresses on FortiManager. During the installation preview stage, the administrator notices that many unset commands need to be pushed.

What can be the main reason for these unset commands?

- A. The DNS addresses in the default system settings are the same as the Training system template
- B. The ADOM is locked by another administrator
- C. The Training system template has other default settings
- D. The Training system template does not have assigned devices

Answer: C (LEAVE A REPLY)

Valid NSE5_FMG-6.2 Dumps shared by BraindumpsPass.com for Helping Passing NSE5_FMG-6.2 Exam! BraindumpsPass.com now offer the **newest NSE5_FMG-6.2 exam dumps**, the BraindumpsPass.com NSE5_FMG-6.2 exam **questions have been updated** and **answers have been corrected** get the **newest** BraindumpsPass.com NSE5_FMG-6.2 dumps with Test Engine here: https://www.braindumpsPass.com/Fortinet/NSE5_FMG-6.2-practice-exam-dumps.html (85 Q&As Dumps, **40%OFF** Special Discount: **Exam-Tests**)

Valid NSE5_FMG-6.2 Dumps shared by BraindumpsPass.com for Helping Passing NSE5_FMG-6.2 Exam! BraindumpsPass.com now offer the **newest NSE5_FMG-6.2 exam dumps**, the BraindumpsPass.com NSE5_FMG-6.2 exam **questions have been updated** and **answers have been corrected** get the **newest** BraindumpsPass.com NSE5_FMG-6.2 dumps with Test Engine here: https://www.braindumpsPass.com/Fortinet/NSE5_FMG-6.2-practice-exam-dumps.html (85 Q&As Dumps, **40%OFF** Special Discount: **Exam-Tests**)