

## Nutanix.NCM-MCI-5.20.v2024-03-09.q56

<b>Exam Code:</b>	NCM-MCI-5.20
<b>Exam Name:</b>	Nutanix Certified Master - Multicloud Infrastructure (NCM-MCI) 5.20
<b>Certification Provider:</b>	Nutanix
<b>Free Question Number:</b>	56
<b>Version:</b>	v2024-03-09
<b># of views:</b>	814
<b># of Questions views:</b>	560
<a href="https://www.exam-tests.com/NCM-MCI-5.20-exam/Nutanix.NCM-MCI-5.20.v2024-03-09.q56.html">https://www.exam-tests.com/NCM-MCI-5.20-exam/Nutanix.NCM-MCI-5.20.v2024-03-09.q56.html</a>	

### NEW QUESTION: 1

Which two advanced features Requires you to install Nutnaix Guest Tools NGT ? ( Choose Two)

- A. File recovery from a third-party backup
- B. Live Migration of a VM between AHV & other Hyervisors
- C. Self-service file-level recovery from VM snapshots
- D. Disaster Recovery of a VM between AHV and ESXi Hypervisors

**Answer: C,D (LEAVE A REPLY)**

### NEW QUESTION: 2

An administrator needs to make sure an RF2 cluster can survive a complete rack failure without negatively effecting workload performance. The current cluster configuration consists of the following:

- \* 30 nodes: distributed 10 nodes per rack across three 42U rack
- \* Each nodes is configured with 40TB usable storage all flash (Cluster Total 1.2 PB Usable)
- \* Current cluster utilization is 900TB storage

Which configuration changes should be made to make sure that the cluster meets the requirements?

- A. Expand the cluster by adding 2 additional nodes per rack, 6 nodes total.
- B. Expand the cluster by adding 8 nodes to a new 42U rack
- C. Expand the cluster by adding 9 nodes to a new 42U rack
- D. Expand the cluster by adding 3 additional nodes per rack, 9 nodes total.

**Answer: D (LEAVE A REPLY)**

### NEW QUESTION: 3

An administrator has a VM that consumes large amounts of storage and has the following characteristics:

- \* Create large / sequential writes
- \* Data must be kept for years
- \* Data is normally only accessed at the end of the year to run report

The administrator decides to use Erasure Coding to save space.

Which feature should the administrator utilize to save space for this VM?

- A. Cache Dedup
- B. Inline Compression
- C. Flash Mode
- D. Post-Process Compression

**Answer: D ([LEAVE A REPLY](#))**

#### **NEW QUESTION: 4**

A three-node cluster has a Nutanix Files instance with three FSVMs.

What happens after a node failure?

- A. The affected FSVM will be restarted on another node.
- B. The affected FSVM will not be restarted on another node due to its agent VM setting.
- C. The affected FSVM will get live-migrated to another node.
- D. The affected FSVM will not be restarted on another node due to its VM-to-VM anti-affinity settings.

**Answer: A ([LEAVE A REPLY](#))**

#### **NEW QUESTION: 5**

An administrator needs to take a single node down for maintenance. Which two steps should the administrator take? (Choose two)

- A. Verify the data resiliency status of the cluster.
- B. Reclaim the licenses to the Nutanix Support Portal.
- C. Shut down or live migrate all VMs off of the node.
- D. Make sure Auto Evacuation is enabled

**Answer: A,C ([LEAVE A REPLY](#))**

#### **NEW QUESTION: 6**

An administrator needs to replace an aging SAN and move to a hyper-converged infrastructure. The existing environment consists of the following hosts that are connected to the SAN:

- \* 5x AIX hosts
- \* 3x Hyper-V hosts
- \* 9x ESXi hosts
- \* 2x physical SQL Clusters (Windows Server 2012R2 hosts)

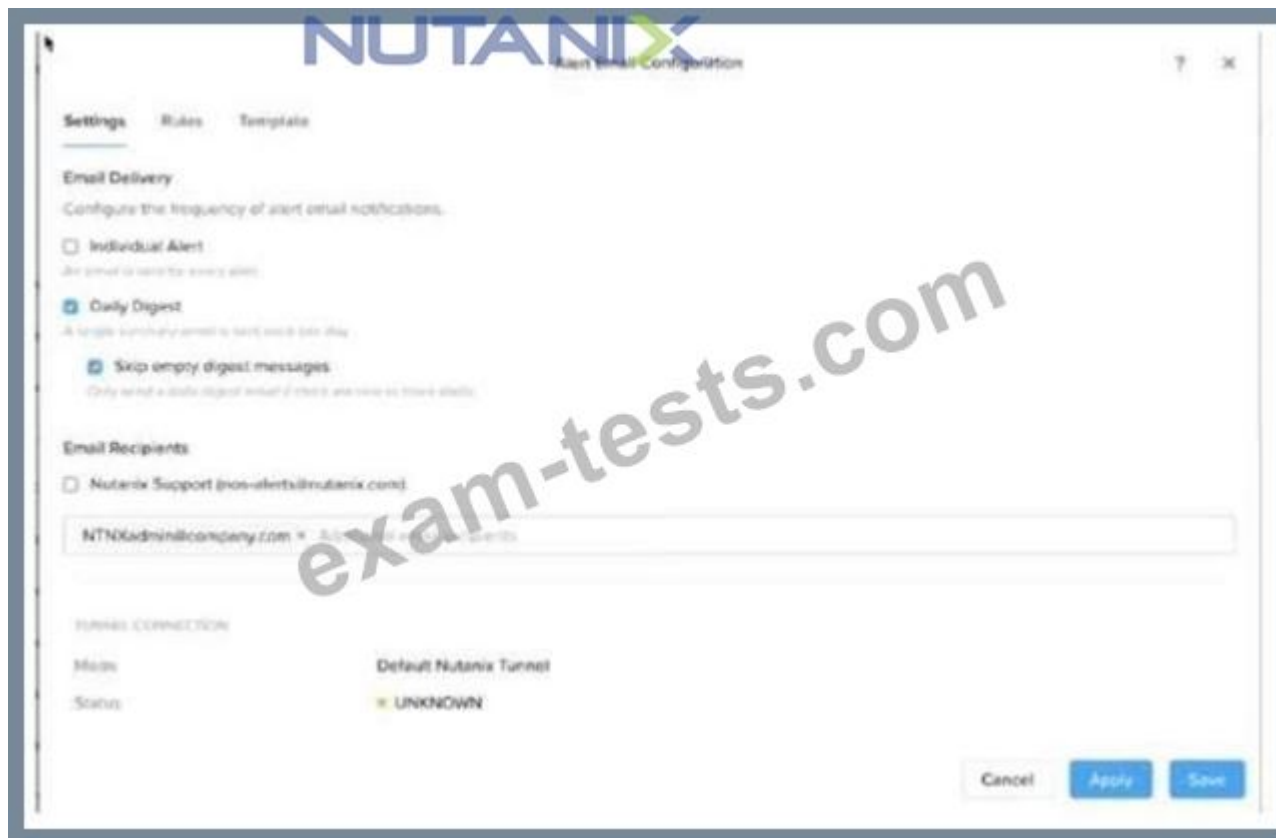
After deploying a Nutanix AHV cluster, which two actions should the administrator take to meet the requirements? (Choose two.)

- A. Deploy Files to support the AIX hosts.
- B. Migrate the ESXi workloads to AHV using Move.
- C. Deploy Volumes to support the AIX and SQL workloads.
- D. Migrate the ESXi and Hyper-V workloads using Move.

**Answer: ([SHOW ANSWER](#))**

#### **NEW QUESTION: 7**

Refer to the exhibit.



An administrator has configured Prism Central to email daily digest of alerts on a cluster, after a week, administrator notices that digests are not being received.

What is the most likely cause of the issue?

- A. the SMTP server is not configured properly
- B. the tunnel connection has not been enabled
- C. Nutanix support is not enabled as a recipient
- D. the recipient address is not registered with Nutanix

**Answer: A ([LEAVE A REPLY](#))**

#### NEW QUESTION: 8

An Administrator expanded the disk capacity on a windows VM, but the VM operator saw no difference in its space.

Which Addition task must the administrator take ?

- A. Reconnect to the iscsi target
- B. Convert to a dynamic Disk
- C. reboot the virtual machine
- D. Expand the current partition

**Answer: ([SHOW ANSWER](#))**

#### NEW QUESTION: 9

An administrator is managing two AHV and vSphere-Based Clusters. The administrator is able to install a Windows Guest OS from an ISO Image to VMWare VMs , but is unable to do the same activity with AHV VMs.

What should the administrator do to successfully perform this action with AHV VMs?

- A. Verify cluster iSCSI data Services IP

- B. Change VM Setting From BIOS to UEFI
- C. Provide virtIO Drivers
- D. Manag Nutanix Guest tools

**Answer: C ([LEAVE A REPLY](#))**

#### **NEW QUESTION: 10**

An application owner had reported that an AHV - based critical application VM is performing very slowly, after initial diagnostics is has been observed that the CPU utilization is significantly higher than normal.

What two actions should the administrator take on this VM without shutting it down? choose two.

- A. configure additional cores in acli
- B. increase the number of vCPU in prism element
- C. ensure CPU Hot-add is supported by the Guest OS
- D. use prism element to increase the number of cores

**Answer: ([SHOW ANSWER](#))**

#### **NEW QUESTION: 11**

An administrator is deploying Nutanix Files 3.5 and needs to configure the sizing of the FSVMs for an increased number of concurrent SMB connections over the default 750.

What should the administrator do?

- A. Complete the default installation change the CPU and RAM m Prism, and then log into the File Server dashboard and change the Filer Server Properties
- B. During installation, click Customize on the File Server Installation screen, change the number of connections, and finish the installation
- C. During installation, input the correct number of connections in the File Server Installation screen and complete the installation
- D. Deploy the Files VMs. power down the three FSVMs. change the CPU and RAM via Prism, and then power the three FSVMs back up

**Answer: ([SHOW ANSWER](#))**

#### **NEW QUESTION: 12**

An administrator has a 4-node Nutanix cluster running on AHV. The administrator creates a new storage container and makes that all available to all hosts.

Which storage protocol is used for Virtual Machines to access virtual disks on the storage container?

- A. iSCSI
- B. NFS
- C. Fiber Channel
- D. SMB/CIFS

**Answer: A ([LEAVE A REPLY](#))**

#### **NEW QUESTION: 13**

An administrator migrates a VM onto a new Nutanix cluster. After the migration, the administrator observes the following conditions:

- \* Cluster memory utilization: 64%
- \* Cluster CPU utilization: 19%
- \* Cluster storage utilization: 32%

- \* Average VM CPU utilization: 25%
- \* Average VM CPU ready%: 24%
- \* Average VM memory utilization: 60%

Which two changes should the administrator make to improve VM performance? (Choose two.)

- A. Add more memory to the VMs.
- B. Reduce the number of vCPUs assigned to VMs.
- C. Replace high core count CPUs with high clock rate CPUs. (also can be but is physical invas)
- D. Reduce the number of VMs on the hosts.

**Answer: B,D (LEAVE A REPLY)**

ref <http://www.joshodgers.com/tag/cpu-ready/>

#### **NEW QUESTION: 14**

An administrator is responsible for the following Nutanix Enterprise Cloud environment:

- \* A central datacenter with a 20-node cluster with 1.5PB of storage
- \* Five remote sites each with a 4-node cluster with 200TB storage

The remote sites are connected to the datacenter via 1GB links with an average latency of 6 ms RTT. What is the minimum RPO the administrator can achieve for this environment?

- A. 0 minutes
- B. 6 hours
- C. 15 minutes
- D. 1 hour

**Answer: (SHOW ANSWER)**

#### **NEW QUESTION: 15**

Which two CVM components are used to provide data Locality? Choose 2

- A. Unified Cache
- B. Volume Group
- C. Extent Store
- D. Logical unit

**Answer: A,C (LEAVE A REPLY)**

#### **NEW QUESTION: 16**

An administrator is creating a Protection Domain to back up multiple application environments.

Which mechanism does Nutanix use to aggregate VMs with common backup and restore objectives?

- A. Policy-based Backups
- B. Application Pools
- C. Consistency Groups
- D. Availability Domains

**Answer: C (LEAVE A REPLY)**

**Valid NCM-MCI-5.20 Dumps** shared by BraindumpsPass.com for Helping Passing NCM-MCI-5.20 Exam! BraindumpsPass.com now offer the **newest NCM-MCI-5.20 exam dumps**, the BraindumpsPass.com NCM-MCI-5.20 exam **questions have been updated** and **answers have been corrected** get the **newest** BraindumpsPass.com NCM-MCI-5.20 dumps with Test Engine here:

<https://www.braindumps.com/Nutanix/NCM-MCI-5.20-practice-exam-dumps.html> (166 Q&As Dumps, **40%OFF Special**

**Discount: Exam-Tests)**

#### **NEW QUESTION: 17**

A customer recently set up Async Replication between Site A and Site B. The customer wants to conduct a planned failover and clicks Activate on Site B.

The customer then runs the following command on Site A:

```
ncli pd deactivate_and__destroy_vms name=<protection_domain_name>
```

What does this do to the customer environment?

- A.** VMs get deleted from Site B. and the protection domain is now Active.
- B.** VMs are powered off on Site A and must be manually powered on at Site B.
- C.** VMs get deleted from Site A and the protection domain is no longer active.
- D.** Customer must then manually power off VMs at Site A and power them on at Site B.

**Answer: (SHOW ANSWER)**

[https://portal.nutanix.com/page/documents/details?targetId=Web-Console-Guide-Prism-v5\\_10:wc-protection-domain-failback-disaster.html](https://portal.nutanix.com/page/documents/details?targetId=Web-Console-Guide-Prism-v5_10:wc-protection-domain-failback-disaster.html)

#### **NEW QUESTION: 18**

Over the period of 2 to 3 weeks, a cluster displays the following:

- \* Periods where Warning Alerts of memory usage over 75% are asserted
- \* Periods where Critical Warnings of memory usage over 90% are asserted
- \* Periods of slow or frozen VDI desktops have caused work stoppage or slowdown
- \* VDI clones have periodically not powered up when called, causing work stoppage Which steps should be used to prioritize the administrator's troubleshooting efforts?

- A.** \* Review Analysis Page for memory use pattern
- \* Alert with VDI workload demand
- \* Analyze current and future workload in the Capacity Runaway tab for sufficient resources
- B.** \* Assess resource health on Hardware page
- \* Review the Analysis page for memory usage demand
- \* Determine the VDI workload-to-host affinity across the cluster
- C.** \* Check Analysis page for CPU demand
- \* Verify VDI workload property for memory subscription
- \* Review the Hardware page to determine if the cluster has sufficient RAM
- D.** \* Analyze Alert Pages for a root cause of memory problem
- \* Analyze VM table page to access the VM functionality
- \* Analyze the VDI Clone properties for possible VDI Workload stress

**Answer: A (LEAVE A REPLY)**

**NEW QUESTION: 19**

An administrator needs to create and start five new VMs for a Data Analytics Project (OLAP). The VM Profile is as follows:

\* vCPU:4

\* vRAM: 64 GB

\* vDisk: 1.5 TB

Each of the four nodes of the Nutanix cluster has the following:

\* 24 vCPU. 20% overall usage

\* 192 GB RAM, 60% overall usage

\* 2x1920GBSSD

\* 4x 2 TB HDD

At cluster level, there is a single RF2 container that is 30% utilized and has an extent store capacity of 13.5 TB.

Which component requires administrator attention?

- A. Physical RAM, because it is not enough to power on all of the new VMs.
- B. Storage, because the capacity is not enough to create VMs.
- C. Flash Tier because it is not enough to accommodate the workloads.
- D. Physical Cores, because they are not enough to power on all of the new VMs.

**Answer: ([SHOW ANSWER](#))**

**NEW QUESTION: 20**

An alert about RX errors on eth2 on a node is reported in the cluster. The administrator logs in to the CVM in question, checks the ping\_\* files in the data/logs/syststats folder, and notices intermittent ping loss.

The node in question has the following network configuration:

```

nutanix@NTNX-16xxxxxxxxx5-A-CVM:xx.xx.xx.76:~$ manage_ovs show_uplinks

Bridge: br0
Bond: br0-up
  bond_mode: active-backup
  interfaces: eth3 eth2
  lacp: off
  lacp-fallback: True
  lacp_speed: slow
Bridge: br1
Bond: eth0
  bond_mode: active-backup
  [interfaces: eth0
  lacp: off
  lacp-fallback: True
  lacp_speed: slow
Bridge: br1
Bond: eth0
  bond_mode: active-backup
  interfaces: eth0
  lacp: off
  lacp-fallback: false
  lacp_speed: slow
Bridge: br2
Bridge: br5
nutanix@NTNX-16xxxxxxxxx5-A-CVM:xx.xx.xx.76:~$ manage_ovs show_interfaces
name  mode link speed
eth0  1000 True  1000
eth1  1000 True  1000
eth2  10000 True 10000
eth3  10000 True 10000

nutanix@NTNX-16xxxxxxxxx5-A-CVM:xx.xx.xx.76:~$

```

Which action should be used to troubleshoot without disrupting the VMs running on this node?

- A. Replace the cable from eth2 to the switch
- B. Enable balance-s1b on br0-up and monitor if a problem persists
- C. Check the port on the switch side for any errors
- D. Remove eth3 from br0-up and monitor for new alerts

**Answer: C (LEAVE A REPLY)**

#### NEW QUESTION: 21

A customer has a Nutanix cluster with 10Gb connectivity via switch fabric extenders. The administrator receives NCC health check errors of latency greater than 200ms.

Which action should the administrator take to resolve the NCC errors?

- A. Upgrade NCC and increase the vCPU of the CVM
- B. Add 2 additional 10G uplinks from the switch fabric extenders per node
- C. Upgrade NCC and increase the CVM memory by 4Gb
- D. Replace the switch fabric extenders with 10G line rate switches

**Answer:** ([SHOW ANSWER](#))

**NEW QUESTION: 22**

An administrator needs to maximize storage potential in a six-node cluster. The container is configured with the following:

Post-process compression

Capacity deduplication

What should the administrator configure to increase space savings?

- A. Erasure coding
- B. Cache dedupe
- C. Reserve capacity
- D. Inline compression

**Answer:** ([SHOW ANSWER](#))

**NEW QUESTION: 23**

An administrator needs to configure the cluster to ensure all VMs are capable of being restarted in the event of a host failure.

Which option provides this functionality?

- A. Live Migration
- B. Best Effort
- C. HA Reservation
- D. VM Affinity

**Answer: C** ([LEAVE A REPLY](#))

**NEW QUESTION: 24**

An administrator receives an error indicating that the CVMs in the cluster are not syncing to any NTP servers. An investigation of the issue finds:

- \* The NTP servers are configured in Prism
- \* The time on all CVMs is the same
- \* Both the CVMs and AHV hosts are configured for the UTC time zone

Which two steps can be taken to troubleshoot this issue? (Choose two.)

- A. On a CVM. run the command `a Hash ntpq -pn`.
- B. Restart genesis on all CVMs.
- C. Confirm that the NTP servers are reachable from the CVMs.
- D. Restart the chronos service on all CVMs.

**Answer: A,C** ([LEAVE A REPLY](#))

**NEW QUESTION: 25**

An administrator has been tasked with delivering a report on all nutanix Field Advisors (FAs) Affecting each of the clusters.

What is the most efficient way to collect this data?

- A. Request an environmental audit from the Nutanix Support
- B. Use Prism to run NCC and Check for information on FAs
- C. Review the discoveries information on the support Portal

D. Review Field Advisories published on the Support Portal

Answer: B ([LEAVE A REPLY](#))

**NEW QUESTION: 26**

An administrator is deploying several new application VMs to a Nutanix cluster. The application is very transactional with a 28/72 random, read/write ratio.

What should the administrator do?

- A. Add one large SSD to each node and enable Flash Mode for the VMs.
- B. Add one large virtual disk to each VM, and use it for all application data.
- C. Add a minimum of four SSDs to each node to ensure all writes go to the SSDs.
- D. Add a minimum of four virtual disks to each VM, and aggregate them on guest OS level.

Answer: D ([LEAVE A REPLY](#))

**NEW QUESTION: 27**

Refer to the exhibits.

An administrator has reported that a new VM is not performing well.

## Prism Element, VM Table Metrics

VM Name	Host	IP Address	Cores	Memory Capacity	Storage	CPU Usage	Memory Usage	Controller Read IOPS	Controller Write IOPS	Controller I/O Bandwidth	Controller Avg IO Latency	Backup ...	Flash Mode
NCNCAPVM	PRMFOCDN	192.168.1.100	4	8 GiB	9.86 GiB / 40 GiB	25.85%	0%	0	0	13 KBps	2.33ms	Yes	No

VM Name: NCNCAPVM

Cores: 4

Memory Capacity: 8GiB

Storage: 9.86 GiB / 40 GiB

CPU Usage: 25.85%

Memory Usage: 0%

Controller Read IOPS: 0

Controller Write IOPS: 0

Controller I/O Bandwidth: 13 KBps

Controller Avg IO Latency: 2.33ms

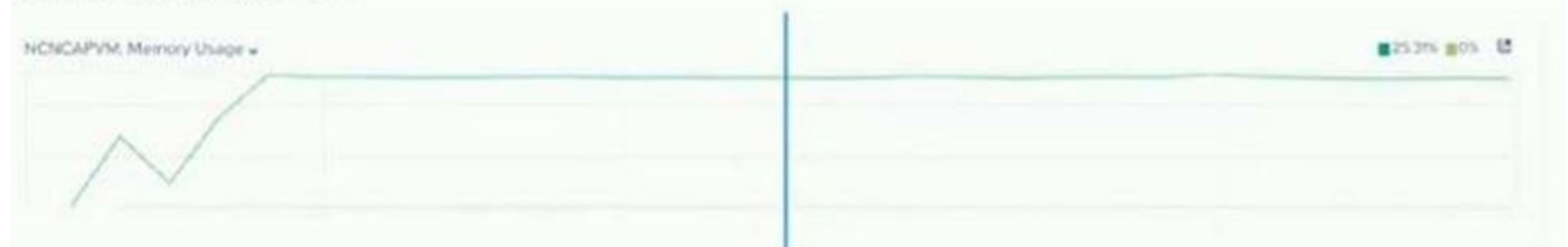
Backup ...: Yes

Flash Mode: No

NUTANIX™

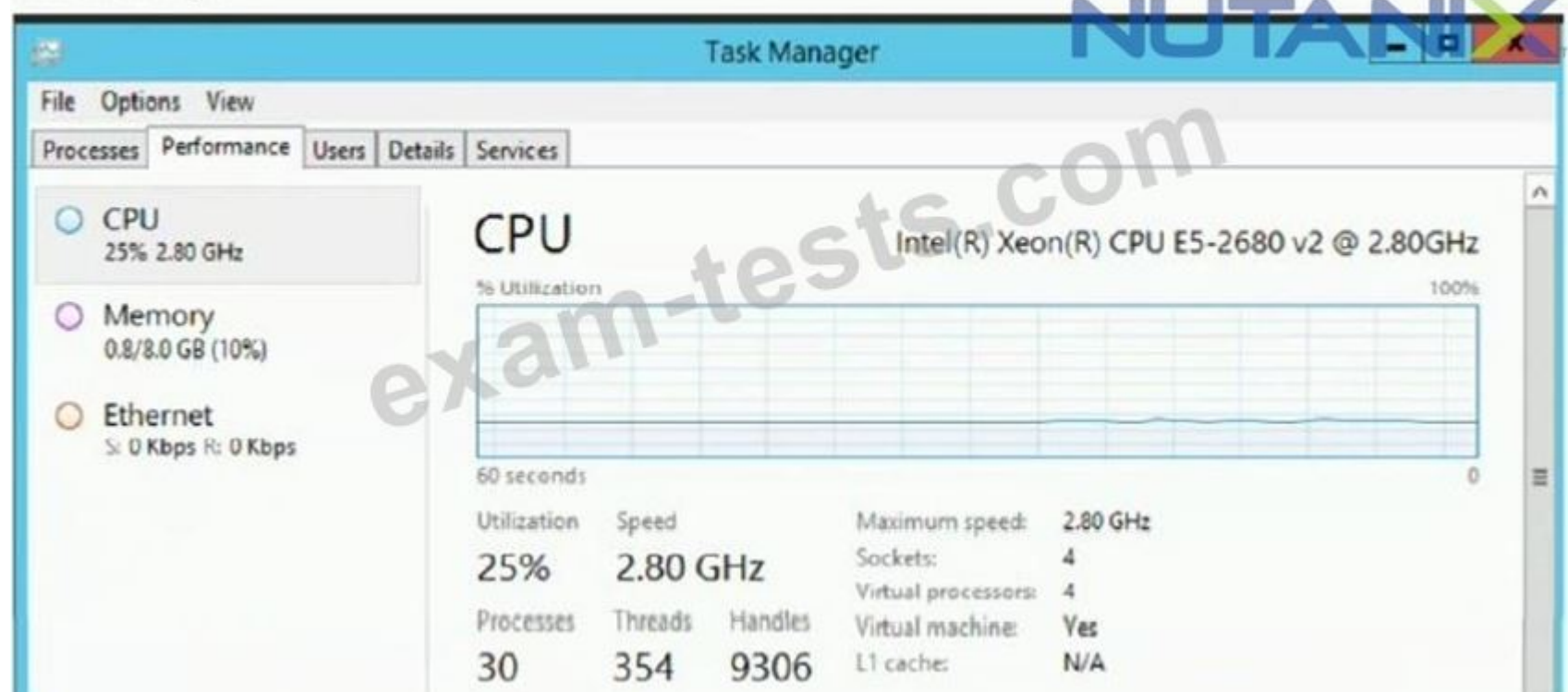
exam-tests.com

## Prism Element, Analysis Chart



Hypervisor CPU Usage: 25%  
Hypervisor CPU Ready Time: 0%

### VM Task Manager



After analyzing the information presented in the exhibits, which option shows the best conclusion regarding this workload?

- A. VM is Storage constrained, because the workload is waiting for storage access.
- B. VM is not CPU constrained, because the VM is not running, a multithreaded application.
- C. VM is CPU constrained because more CPU needs to be added to the VM.
- D. VM is CPU constrained since the hypervisor cannot provide the required resources.

**Answer:** [\(SHOW ANSWER\)](#)

### NEW QUESTION: 28

A systems administrator configures a protection domain replication between two Nutanix clusters. After the first successful replication, the administrator tests DR by clicking activate on the remote cluster.

While VMs are active on the remote cluster, the protection domain is marked as active on both clusters.

What steps are required to return both clusters to their original state?

- A. 1 On the remote site, restore the snapshots from the Protection Domain
- 2. On the remote site, select the Protection Domain and migrate to the primary site
- B. 1. On the remote site, promote the Protection Domain
- 2. On the primary site, change the Protection Domain state from Decoupled to Disabled
- 3 Enable the original primary site as remote site
- C. 1. On the primary site, suspend replications
- 2. On the remote site, deactivate the Protection Domain using ncli
- 3. On the remote site, migrate the protection domain back to the primary site
- D. 1. On the remote site, deactivate the Protection Domain using ncli

2. On the primary site, select the Protection Domain and click migrate

**Answer: D (LEAVE A REPLY)**

**NEW QUESTION: 29**

A customer has a primary datacenter with 12 Nutanix blocks distributed across three racks. The customer wants to achieve the most resiliency possible. They also have a datacenter in a branch office that is 400 kilometers away from the primary datacenter.

Which two solutions should be used? (Choose two.)

- A. Async DR to a remote site
- B. Time Stream to a remote site
- C. Block awareness
- D. Rack awareness

**Answer: A,D (LEAVE A REPLY)**

**NEW QUESTION: 30**

A guest VM is reported to have poor storage performance. It has an I/O profile of 80% read, 20% write, and the HDDs form more than 50% of the read source.

What should an administrator do to resolve this issue?

- A. Use HDDs with higher RPM
- B. Increase the OPLOG
- C. Increase the write cache
- D. Increase SSD capacity

**Answer: (SHOW ANSWER)**

**NEW QUESTION: 31**

Which Windows technology does AHV support to prevent authentication theft?

- A. Endpoint Manager
- B. Active Directory federation Services
- C. Azure AD Multi-Factor
- D. Windows Defender Credential Guard

**Answer: B (LEAVE A REPLY)**

**Valid NCM-MCI-5.20 Dumps** shared by BraindumpsPass.com for Helping Passing NCM-MCI-5.20 Exam! BraindumpsPass.com now offer the **newest NCM-MCI-5.20 exam dumps**, the BraindumpsPass.com NCM-MCI-5.20 exam **questions have been updated** and **answers have been corrected** get the **newest** BraindumpsPass.com NCM-MCI-5.20 dumps with Test Engine here:

<https://www.braindumps.com/Nutanix/NCM-MCI-5.20-practice-exam-dumps.html> (166 Q&As Dumps, **40%OFF Special**

Discount: **Exam-Tests**)

**NEW QUESTION: 32**

An administrator deletes a large amount of data from a Volume Group presented to a Linux VM. The administrator notices that the deleted data has not been reclaimed as usable storage.

What action should be taken to reclaim the storage capacity?

- A. Shrink the Volume Group that is associated with the Linux VM
- B. Unmount the Volume Group and then Remount the Volume Group
- C. Enable the unman operation on the Linux VM
- D. Run Defrag on the Linux VM

**Answer: B (LEAVE A REPLY)**

<https://next.nutanix.com/how-it-works-22/vm-capacity-and-prism-capacity-are-different-33134>

### NEW QUESTION: 33

An administrator is managing multiple Windows and Linux VMs connected to Nutanix Volumes. The Linux VMs are experiencing intermittent connectivity issues. The Windows VMs do not experience the same issue.

Which option should the administrator use to resolve this issue?

- A. Utilize Jumbo Frames
- B. Utilize a separate subnet for the Linux VMs
- C. Set the SCSI timeout value to 60
- D. Add additional disks to the Volume Group

**Answer: C (LEAVE A REPLY)**

### NEW QUESTION: 34

After the migration, some SQL queries take longer to execute than prior to migration.

The following SQL best practices were applied while creating the SQL VM on Nutanix:

- \* 8 vDisks per SQL server VM
- \* Database and Log files on separate vDisk
- \* 2 TempDB database drives and 1 TempDB log drive

What should the administrator do to improve the SQL Server performance?

- A. Redistribute existing data by creating additional database file and enable autogrowth
- B. Create multiple SQL log files and disable autogrowth
- C. Create multiple TempDB data files and enable autogrowth
- D. Redistribute existing data by creating additional database files and disable autogrowth

**Answer: (SHOW ANSWER)**

### NEW QUESTION: 35

How should an administrator enable the recycle bin on a nutanix cluster?

- A. Select the enable recycle bin checkbox in the configure CVM page of the cluster setting
- B. Select Retain Deleted VMs for 24h in the cluster details page of the cluster setting
- C. Select the Enable Recycle Bin checkbox on the storage Overview page
- D. select Retain Deleted VMs for 8h in the cluster Details Page of the cluster setting

**Answer: B (LEAVE A REPLY)**

**NEW QUESTION: 36**

A Nutanix cluster is equipped with four nodes. Four VMs on this cluster have been configured with a VM-VM anti-affinity policy and are each being hosted by a different node.

What occurs to the cluster and these VMs during an AHV upgrade?

- A. One node hosts two VMs while the node being upgraded is in maintenance mode.
- B. The AHV pre-upgrade checks fail until the four VMs are powered off.
- C. One VM out of the four powers down when the node hosting it reboots.
- D. The AHV pre-upgrade checks fail until the administrator disables the anti-affinity policy.

**Answer: D (LEAVE A REPLY)**

**NEW QUESTION: 37**

An administrator of a Nutanix Enterprise Cloud has microsegmentation enabled and a firewall VM installed. The security team notifies the administrator that one of the VMs hosted in the environment has been exhibiting suspect network activity. The administrator wants to isolate the VM from the production network, but must still be able to access it to perform diagnostics.

What should the administrator do to meet the requirement?

- A. Disable the vNIC on the affected VM
- B. Quarantine the VM using the Forensic Method
- C. Create a firewall rule that blocks VM traffic but permits diagnostic access
- D. Create a security policy with a service chain directing that VMs traffic to the firewall VM

**Answer: B (LEAVE A REPLY)**

Ref <https://portal.nutanix.com/page/documents/kbs/details?targetId=kA00e000000LIelCAG>

**NEW QUESTION: 38**

Which Component Allows you to pair sites for disaster Recovery Policy Creation Using Nutanix Leap?

- A. Recovery Plans
- B. Availability Zones
- C. Protection Policies
- D. Protection Domains

**Answer: (SHOW ANSWER)**

**NEW QUESTION: 39**

An administrator is deploying a three-tier application on a Nutanix Enterprise Cloud consisting of web, application, and database VMs. Traffic between the servers must be limited to specific services/ports. There is an application layer firewall VM deployed on one host in the cluster.

In which way should the administrator meet this requirement?

- A. Categorize the VMs in Prism Central and utilize Flow to set a security policy
- B. Create a network for each type of VM, and use policy-based routing to control the traffic flow
- C. Configure a security policy and service chain redirecting the server traffic through the firewall
- D. Separate the web, application and database VMs on to dedicated VLANs

**Answer: (SHOW ANSWER)**

**NEW QUESTION: 40**

A customer with a four-node RF2 cluster is adding application VMs to their system. After adding these VMs, the Prism dashboard shows 81% storage utilization.

What is the consequence of running the cluster at 81% storage utilization?

- A. The customer has the ability to add more VMs up to the 100% storage utilization.
- B. There is available capacity in the storage fabric and the cluster is resilient.
- C. Node failure is imminent due to storage utilization.
- D. The cluster is not resilient in the storage fabric

**Answer:** (SHOW ANSWER)

<https://next.nutanix.com/how-it-works-22/recommended-maximum-storage-utilization-37234>

**NEW QUESTION: 41**

A company needs to replicate their VMs to a remote site and must have an RPO of less than 1 hour.

When creating a protection domain, what should an administrator do to meet this requirement?

- A. Enable Availability Zones and send the VM to multiple targets
- B. Enable Async Replication with an RPO of 60 minutes
- C. Enable Near-Sync Replication with an RPO of 15 minutes
- D. Enable Entity Sync on the designated VMs

**Answer:** B (LEAVE A REPLY)

**NEW QUESTION: 42**

An administrator recently installed Prism Central to use categories, after having created categories and values, the administrator needs to apply these categories to multiple workloads.

How can the administrator easily perform this task?

- A. Choose multiple VMs and select Manage Categories
- B. Create a Playbook to automate the process
- C. Go to Categories and select the VMs to be added
- D. Manage the VMs ownership

**Answer:** A (LEAVE A REPLY)

**NEW QUESTION: 43**

An administrator is monitoring the Nutanix v5.15-based AOS cluster performance logs and notices that a SQL server VM is greatly exceeding its intended maximum IOPS. The administrator has confirmed that a QoS policy was previously created for the group of VMs this server is a member of.

What are two reasons that this VM would exceed its maximum configured IOPS from the QoS Policy? (Choose two.)

- A. The SQL Server VM has volume groups attached.
- B. It was cloned from another SQL Server VM that was a member of the QoS Policy.
- C. The VM is missing the required snapshot needed to implement the QoS Policy.
- D. The VM was not created as an AFS virtual machine.

**Answer:** A,D (LEAVE A REPLY)

**NEW QUESTION: 44**

Which Nutanix Product Provide S3-Compatible Storage?

- A. Objects
- B. Files
- C. Volumes
- D. Mine

Answer: ([SHOW ANSWER](#))

**NEW QUESTION: 45**

An administrator needs to expand a nutanix cluster that is tagging the network traffic at the CVM and AHV level, however the administrator doesn't remember the configured VLAN ID.

Which AHV command can the administrator run to find the correct VLAN ID?

- A. acli
- B. manage\_ovs
- C. ovs-vsctl
- D. ifconfig

Answer: C ([LEAVE A REPLY](#))

**NEW QUESTION: 46**

An administrator is currently using both 10g uplink with LACP and balance-tcp. A single VM should not be allowed to use more than a single 10G uplink, and both uplinks should be utilized.

Which two command should be used to configure the bond? (choose two)

- A. Ovs-vsctl set port br0-up bond\_mode=balance-slb
- B. Ovs-vsctl set port br0-up other\_config: bond-rebalance-interval=30000
- C. Ovs-vsctl set port br0-up bond\_mode=balance-tcp
- D. Ovs-vsctl set port br0-up bond\_mode=active-backup

Answer: ([SHOW ANSWER](#))

**Valid NCM-MCI-5.20 Dumps** shared by BraindumpsPass.com for Helping Passing NCM-MCI-5.20 Exam! BraindumpsPass.com now offer the **newest NCM-MCI-5.20 exam dumps**, the BraindumpsPass.com NCM-MCI-5.20 exam **questions have been updated** and **answers have been corrected** get the **newest** BraindumpsPass.com NCM-MCI-5.20 dumps with Test Engine here:

<https://www.braindumpsPass.com/Nutanix/NCM-MCI-5.20-practice-exam-dumps.html> (166 Q&As Dumps, **40%OFF Special**

Discount: **Exam-Tests**)

**NEW QUESTION: 47**

An administrator is deploying a new application to a Nutanix Enterprise Cloud. The application requires a security to prevent unauthorized access. The application also uses many non-standard ports that are unique to it. Security should not be changed for existing applications. What should the administrator do to meet these requirement?

- A. Create new categories for the VMs, and create new security policies that include the new categories.

- B. Create new categories for the VMs, and modify existing security policies to include the new categories.
- C. Use existing categories for the VMs. and create new security policies to use the existing categories.
- D. Use existing categories for the VMs and modify existing security policies to include the specific port.

**Answer: A ([LEAVE A REPLY](#))**

#### **NEW QUESTION: 48**

An administrator is updating disk firmware using LCM and receives the following message:

"there have been 10 or more cluster services restarts within 15 minutes in the Controller VM" The message appears as each drive is upgraded.

What is the reason this message is being generated?

- A. A node has been rebalanced
- B. A drive has been reformatted
- C. A node has been rebooted
- D. A drive has been ejected

**Answer: ([SHOW ANSWER](#))**

#### **NEW QUESTION: 49**

Assuming Sufficient Storage Capacity, how long are entities kept in the prism recycle bin?

- A. 8 hours
- B. 1 week
- C. 1 month
- D. 24 hours

**Answer: D ([LEAVE A REPLY](#))**

#### **NEW QUESTION: 50**

Which two access protocols are supported by Files? (Choose two.)

- A. SMB
- B. iSCSI
- C. FCOE
- D. NFS

**Answer: A,D ([LEAVE A REPLY](#))**

#### **NEW QUESTION: 51**

A customer has a four-node cluster and is using Volume Groups to provide storage services to a SQL cluster.

In the event of a CVM failure in the cluster, what is the expected IO path of the volume group's iSCSI targets?

- A. vDisk directed to failed CVM are redirected to another CVM and automatically reconnect
- B. vDisk directed at failed CVM will disconnect and reconnect when the failed CVM comes back online
- C. vDisk directed at failure CVM are redirected to Data Services IP until CVM is reconnected
- D. vDisk directed to CVM that failed to disconnect and will not reconnect without manual intervention

**Answer: A ([LEAVE A REPLY](#))**

**NEW QUESTION: 52**

An Administrator has received the following critical alert:

Node 192.168.148.172 is marked to be detached from metadata the administrator has opened a case with Nutanix and the support engineer has requested more information about the error. Which two action should the administrator take in the health check dashboard to collect the requested information? choose two

- A. Run Logbay
- B. Open A remote support tunnel
- C. Create an entity chart
- D. Run Nutanix cluster check

**Answer: A,D ([LEAVE A REPLY](#))**

**NEW QUESTION: 53**

An administrator wants to make sure there are enough Compute resources within the AHV-Based Nutanix Cluster. During any maintenance operation or a node failure. What configuration should the administrator change to achieve this task?

- A. Enable HA reservation
- B. Enable Degraded Node Detection
- C. Reserve 33% CPU and 33% memory
- D. Set virtual machine affinity rules

**Answer: A ([LEAVE A REPLY](#))**

**NEW QUESTION: 54**

In an AHV cluster, an administrator needs to enable an application to share a disk b group but needs to enable the VMs to see the volume group.

How should the administrator accomplish this task?

- A. Add a disk to one VM and enable read/write on it from the other VM.
- B. Add the volume group to the VM using the update link from the VM dashboard.
- C. Create a shared folder for the VMs using Nutanix Files.
- D. Configure a virtual disk on each VM with identical attributes in the storage dashboard.

**Answer: B ([LEAVE A REPLY](#))**

**NEW QUESTION: 55**

A systems administrator needs to add more VMs to their Nutanix cluster.

Which two actions should the administrator perform to determine if the current cluster can accommodate the new VMs? (Choose two.)

- A. Perform an Inventory with Life Cycle Management.
- B. Determine utilization with Cluster Runway.
- C. Enable Deduplication and Erasure Coding.
- D. Utilize Optimize Resources for VM efficiency.

**Answer: ([SHOW ANSWER](#))**

Reference:

#### ONE-CLICK PLANNING

Prism includes a powerful application and VM-centric capacity planning engine that is powered by Nutanix's patent-pending X-Fit technology.

- **Capacity Behavior Analytics:** Predictive analysis of capacity usage and trends based on workload behavior enabling pay-as-you-grow scaling.
- **Capacity Optimization Advisor:** Infrastructure optimization recommendations to improve efficiency and performance based on VM behavioral analysis.
- **Just In Time Forecast:** Capacity expansion forecast to meet future workload growth.

#### NEW QUESTION: 56

An administrator needs to deploy an application with a large amount of data connected via Nutanix Volumes. Which two actions should the administrator take when designing the Volume Group? (Choose two.)

- A. Use multiple subnets for iSCSI traffic
- B. Enable RSS (Receive Side Scaling)
- C. Enable thick provisioning on the Volume Group(s)
- D. Distribute workload across multiple virtual disks

Answer: B,D (LEAVE A REPLY)

## 9. Recommendations

- Use the Data Services IP method for external host connectivity to VGs.
- For backward compatibility, you can upgrade existing environments nondisruptively and continue to use MPIO for load balancing and path resiliency.
- For security, use at least one-way CHAP.
- Leave ADS enabled. (Enabled is the default setting.)
- Use multiple disks rather than a single large disk for an application. Consider using a minimum of one disk per Nutanix node to distribute the workload across all nodes in a cluster. Multiple disks per Nutanix node may also improve an application's performance.
- For performance-intensive environments, we recommend using between four and eight disks per CVM for a given workload.
- Use dedicated network interfaces for iSCSI traffic in your hosts.
- Place hosts that use Nutanix Volumes on the same subnet as the iSCSI data services IP.
- Use a single subnet (broadcast domain) for iSCSI traffic. Avoid routing between the client initiators and CVM targets.
- Receive-side scaling (RSS) allows the system to use multiple CPUs for network activity. With RSS enabled, multiple CPU cores process network traffic, preventing a single CPU core from becoming a bottleneck. Enabling RSS within hosts can be beneficial for heavy iSCSI workloads. For VMs running in ESXi environments, RSS requires VMXNET3 VNICs. For Hyper-V environments, enable VMQ to take full advantage of Virtual RSS.

**Valid NCM-MCI-5.20 Dumps** shared by BraindumpsPass.com for Helping Passing NCM-MCI-5.20 Exam! BraindumpsPass.com now offer the **newest NCM-MCI-5.20 exam dumps**, the BraindumpsPass.com NCM-MCI-5.20 exam **questions have been updated** and **answers have been corrected** get the **newest** BraindumpsPass.com NCM-MCI-5.20 dumps with Test Engine here:

<https://www.braindumpspass.com/Nutanix/NCM-MCI-5.20-practice-exam-dumps.html> (**166** Q&As Dumps, **40%OFF** Special

Discount: **Exam-Tests**)