

# Salesforce.Data-Architecture-And-Management-Designer.v2022-04-03.q111

<b>Exam Code:</b>	Data-Architecture-And-Management-Designer
<b>Exam Name:</b>	Salesforce Certified Data Architecture and Management Designer
<b>Certification Provider:</b>	Salesforce
<b>Free Question Number:</b>	111
<b>Version:</b>	v2022-04-03
<b># of views:</b>	2781
<b># of Questions views:</b>	1110
<a href="https://www.exam-tests.com/Data-Architecture-And-Management-Designer-exam/Salesforce.Data-Architecture-And-Management-Designer.v2022-04-03.q111.html">https://www.exam-tests.com/Data-Architecture-And-Management-Designer-exam/Salesforce.Data-Architecture-And-Management-Designer.v2022-04-03.q111.html</a>	

## NEW QUESTION: 1

Universal Containers has a legacy client server app that has a relational database that needs to be migrated to Salesforce.

What are the three key actions that should be done when data modeling in Salesforce?  
(Choose three.)

- A. Implement legacy data model within Salesforce using custom fields
- B. Work with legacy application owner to analyze legacy data model
- C. Map legacy data to Salesforce objects
- D. Identify data elements to be persisted in Salesforce
- E. Map legacy data to Salesforce custom objects

**Answer: A,C,D (LEAVE A REPLY)**

## NEW QUESTION: 2

NTO has 1 million customer records spanning 25 years. As part of its new SF project, NTO would like to create a master data management strategy to help preserve the history and relevance of its customer data.

Which 3 activities will be required to identify a successful master data management strategy?  
Choose 3 answers:

- A. Define the systems of record for critical data
- B. Identify data to be replicated
- C. Install a data warehouse
- D. Create a data archive strategy
- E. Choose a Business Intelligence tool.

**Answer:** ([SHOW ANSWER](#))

**NEW QUESTION: 3**

Universal Container (UC) is replacing a home grown CRM solution with Salesforce, UC has decided to migrate operational (Open and active) records to Salesforce, while keeping historical records in legacy system, UC would like historical records to be available in Salesforce on an as needed basis.

Which solution should a data architect recommend to meet business requirement?

- A. Leverage real-time integration to pull records into Salesforce.
- B. Leverage mashup to display historical records in Salesforce.
- C. Build a chair solution to go the legacy system and display records.
- D. Bring all data Salesforce, and delete it after a year.

**Answer:** ([SHOW ANSWER](#))

**NEW QUESTION: 4**

UC is migrating individual customers (B2C) data from legacy systems to SF. There are millions of customers stored as accounts and contacts in legacy database.

Which object model should a data architect configure within SF ?

- A. Leverage person account object in Salesforce
- B. Leverage custom account and contact object in SF
- C. Leverage custom person account object in SF
- D. Leverage standard account and contact object in SF

**Answer:** ([SHOW ANSWER](#))

**NEW QUESTION: 5**

North Trail Outfitters (NTD) is in the process of evaluating big objects to store large amounts of asset data from an external system. NTO will need to report on this asset data weekly.

Which two native tools should a data architect recommend to achieve this reporting requirement?

- A. Standard SOQL queries
- B. Async SOQL with a custom object
- C. Standard reports and dashboards
- D. Einstein Analytics

**Answer:** B,D ([LEAVE A REPLY](#))

**NEW QUESTION: 6**

A company has 12 million records, and a nightly integration queries these records.

Which two areas should a Data Architect investigate during troubleshooting if queries are timing out? (Choose two.)

- A. Create custom indexes on the fields used in the filter criteria.
- B. Make sure the query doesn't contain NULL in any filter criteria.

- C. Modify the integration users' profile to have View All Data.
- D. Create a formula field instead of having multiple filter criteria.

**Answer: A,B ([LEAVE A REPLY](#))**

#### **NEW QUESTION: 7**

Cloud Kicks needs to optimize data stewardship engagement for a Salesforce instance. Before proposing design recommendations, the Data Architect is first assessing relevant areas of Salesforce.

Which three areas are appropriate to assess? (Choose three.)

- A. Assess the metadata xml files for redundant fields to consolidate.
- B. Determine if any integration points create records in Salesforce.
- C. Export the setup audit trail to review what fields are being used.
- D. Run key reports to determine what fields should be required.
- E. Assess the sharing model to determine impact on duplicate records.

**Answer: A,D,E ([LEAVE A REPLY](#))**

Explanation/Reference:

#### **NEW QUESTION: 8**

UC has a requirement to migrate 100 million order records from a legacy ERP application into the salesforce platform. UC does not have any requirements around reporting on the migrated data.

What should a data architect recommend to reduce the performance degradation of the platform?

- A. Implement a custom big object to store the data.
- B. Use a standard big object defined by salesforce.
- C. Create a custom object to store the data.
- D. Use the standard "Order" object to store the data.

**Answer: ([SHOW ANSWER](#))**

#### **NEW QUESTION: 9**

UC has a salesforce org with multiple automated processes defined for group membership process. UC also have multiple admins on staff that perform manual adjustments to the role hierarchy. The automated task and manual task overlap daily and UC is experiencing "Lock errors" consistently.

What should a data architect recommend mitigate these errors?

- A. Remove SOQL statements from APEX loops.
- B. Enable sharing recalculations
- C. Enable granular locking.
- D. Ask salesforce support for addition CPU power.

**Answer: A ([LEAVE A REPLY](#))**

### **NEW QUESTION: 10**

Universal Containers would like to remove data silos and connect their legacy CRM together with their ERP and with Salesforce. Most of their sales team has already migrated to Salesforce for daily use, although a few users are still on the old CRM until some functionality they require is completed. Which two techniques should be used for smooth interoperability now and in the future.

- A.** Replicate ongoing changes in the legacy CRM to Salesforce to facilitate a smooth transition when the legacy CRM is eventually retired.
- B.** Work with stakeholders to establish a Master Data Management plan for the system of record for specific objects, records, and fields.
- C.** Specify the legacy CRM as the system of record during transition until it is removed from operation and fully replaced by Salesforce.
- D.** Do not connect Salesforce and the legacy CRM to each other during this transition period, but do allow both to interact with the ERP.

**Answer: B,C (LEAVE A REPLY)**

### **NEW QUESTION: 11**

Universal Containers (UC) wants to store product data in Salesforce, but the standard Product object does not support the more complex hierarchical structure which is currently being used in the product master system.

How can UC modify the standard Product object model to support a hierarchical data structure in order to synchronize product data from the source system to Salesforce?

- A.** Create a custom lookup field on the standard Product to reference the parent record in the hierarchy.
- B.** Create a custom lookup field on the standard Product to reference the child record in the hierarchy.
- C.** Create an Apex trigger to synchronize the Product Family standard picklist field on the Product object.
- D.** Create a custom master-detail field on the standard Product to reference the child record in the hierarchy.

**Answer: A (LEAVE A REPLY)**

### **NEW QUESTION: 12**

Northern Trail Outfitters (NTO) operates a majority of its business from a central Salesforce org. NTO also owns several secondary orgs that the service, finance, and marketing teams work out of. At the moment, there is no integration between central and secondary orgs, leading to data-visibility-issues.

Moving forward, NTO has identified that a hub-and-spoke model is the proper architecture to manage its data, where the central org is the hub and the secondary orgs are the spokes. Which tool should a data architect use to orchestrate data between the hub org and spoke orgs?

- A. Develop custom APIs to poll the spoke org for change data and push into the hub org.
- B. A middleware solution that extracts and distributes data across both the hub and spokes.
- C. Develop custom APIs to poll the hub org for change data and push into the spoke orgs.
- D. A backup and archive solution that extracts and restores data across orgs.

**Answer: D ([LEAVE A REPLY](#))**

#### **NEW QUESTION: 13**

Universal Containers (UC) has implemented Sales Cloud and it has been noticed that Sales reps are not entering enough data to run insightful reports and dashboards. UC executives would like to monitor and measure data quality metrics. What solution addresses this requirement?

- A. Export the data to an enterprise data warehouse and use BI tools for data quality.
- B. Use third-party AppExchange tools to monitor and measure data quality.
- C. Use custom objects and fields to calculate data quality.
- D. Generate reports to view the quality of sample data.

**Answer: B ([LEAVE A REPLY](#))**

#### **NEW QUESTION: 14**

Universal Containers has a requirement to store more than 100 million records in salesforce and needs to create a custom big object to support this business requirement. Which two tools should a data architect use to build custom object?

- A. Use DX to create big object.
- B. Use Metadata API to create big object.
- C. Go to Big Object In setup select new to create big object.
- D. Go to Object manager In setup and select new to create big object.

**Answer: B,C ([LEAVE A REPLY](#))**

#### **NEW QUESTION: 15**

Universal Containers (CU) is in the process of implementing an enterprise data warehouse (EDW). UC needs to extract 100 million records from Salesforce for migration to the EDW. What data extraction strategy should a data architect use for maximum performance?

- A. Use the Bulk API in parallel mode.
- B. Install a third-party AppExchange tool.
- C. Utilize PK Chunking with the Bulk API.
- D. Call the REST API in successive queries.

**Answer: ([SHOW ANSWER](#))**

#### **NEW QUESTION: 16**

Universal Containers (UC) uses Salesforce for tracking opportunities (Opportunity). UC uses an internal ERP system for tracking deliveries and invoicing. The ERP system supports SOAP API and OData for bi-directional integration between Salesforce and the ERP system.

UC has about one million opportunities. For each opportunity, UC sends 12 invoices, one per month. UC sales reps have requirements to view current invoice status and invoice amount from the opportunity page. When creating an object to model invoices, what should the architect recommend, considering performance and data storage space?

- A. Use Streaming API to get the current status from the ERP and display on the Opportunity page.
- B. Create a custom object Invoice \_\_c with a Lookup relationship with Opportunity.
- C. Create an external object Invoice \_\_x with a Lookup relationship with Opportunity.
- D. Create a custom object Invoice \_\_c with a master -detail relationship with Opportunity.

**Answer: (SHOW ANSWER)**

**Valid Data-Architecture-And-Management-Designer Dumps** shared by BraindumpsPass.com for Helping Passing Data-Architecture-And-Management-Designer Exam! BraindumpsPass.com now offer the **newest Data-Architecture-And-Management-Designer exam dumps**, the BraindumpsPass.com Data-Architecture-And-Management-Designer exam **questions have been updated** and **answers have been corrected** get the **newest** BraindumpsPass.com Data-Architecture-And-Management-Designer dumps with Test Engine here:  
<https://www.braindumpsPASS.com/Salesforce/Data-Architecture-And-Management-Designer-practice-exam-dumps.html> (224 Q&As Dumps, **40%OFF Special Discount: Exam-Tests**)

#### **NEW QUESTION: 17**

A casino is implementing salesforce and is planning to build a customer 360 view for a customer who visits its resorts. The casino currently maintained the following systems that records customer activity:

1. Point of sales system: All purchases for a customer.
2. Salesforce: All customer service activity and sales activity for a customer.
3. Mobile app: All bookings, preferences and browser activity for a customer.
4. Marketing: All email, SMS and social campaigns for a customer.

Customer service agents using salesforce would like to view the activities from all system to provide supports to customers. The information has to be current and real time.

What strategy should the data architect implement to satisfy this requirement?

- A. Use a customer data mart to view the 360 view of customer.
- B. Explore external data sources in salesforce to build 360 view of customer.
- C. Migrate customer activities from all 4 systems into salesforce.
- D. Periodically upload summary information in salesforce to build 360 view.

**Answer: B (LEAVE A REPLY)**

**NEW QUESTION: 18**

US has released a new disaster recovery (DR) policy that states that cloud solutions need a business continuity plan in place separate from the cloud providers built in data recovery solution.

Which solution should a data architect use to comply with the DR policy?

- A.** Leverage salesforce weekly exports, and store data in Flat files on a protected system.
- B.** Write a custom batch job to extract data changes nightly, and store in an external protected system.
- C.** Utilize an ETL tool to migrate data to an on-premise archive solution.
- D.** Leverage a 3rd party tool that extract salesforce data/metadata and stores the information in an external protected system.

**Answer:** ([SHOW ANSWER](#))

**NEW QUESTION: 19**

UC has a roll-up summary field on Account to calculate the count of contacts associated with an account.

During the account load, SF is throwing an "Unable to lock a row" error.

Which solution should a data architect recommend, to resolve the error?

- A.** Defer roll-up summary fields calculation during data migration.
- B.** Perform Batch job in serial mode and reduce batch size
- C.** Leverage data loader platform API to load data.
- D.** Perform Batch job in parallel mode and reduce Batch size

**Answer:** ([SHOW ANSWER](#))

**NEW QUESTION: 20**

Ursa Major Solar has defined a new Data Quality Plan for their Salesforce data.

Which two approaches should an Architect recommend to enforce the plan throughout the organization?

(Choose two.)

- A.** Enforce critical business processes by using Workflow, Validation Rules, and Apex code.
- B.** Schedule reports that will automatically catch duplicates and merge or delete the records every week.
- C.** Ensure all data is stored in an external system and set up an integration to Salesforce for view-only access.
- D.** Schedule a weekly dashboard displaying records that are missing information to be sent to managers for review.

**Answer:** ([SHOW ANSWER](#))

**NEW QUESTION: 21**

Universal Container (UC) is migrating data from legacy system to Salesforce. UC would like to preserve the following information on records being migrated:

1. Date time stamps for created date and last modified date.
  2. Ownership of records belonging to inactive users being migrated to Salesforce.
- Which two solutions should a data architect recommend to preserve date timestamps and ownership on records? (Choose two.)

- A. Enable Update Records with Inactive Owners Permission
- B. Enable modify all and view all permission
- C. Enable Set Audit Fields upon Record Creation Permission
- D. Log a case with Salesforce to allow updating these fields

**Answer: (SHOW ANSWER)**

Explanation/Reference:

### NEW QUESTION: 22

A customer is operating in a highly regulated industry and is planning to implement Salesforce. The customer information maintained in Salesforce, includes the following:

1. Personally identifiable information (PII)
2. IP restrictions on profiles organized by geographic location
3. Financial records that need to be private and accessible only by the assigned sales associate
4. Users should not be allowed to export information from Salesforce

Enterprise Security has mandated access to be restricted to users within a specific geography and detail monitoring of user activity.

Which three Salesforce Shield capabilities should a data architect recommend? (Choose three.)

- A. Encrypt sensitive customer information maintained in Salesforce
- B. Restrict access to Salesforce from users outside specific geography
- C. Prevent sales users access to customer PII information
- D. Transaction Security policies to prevent export of Salesforce data
- E. Event monitoring to monitor all user activity

**Answer: A,B,E (LEAVE A REPLY)**

### NEW QUESTION: 23

Northern trail Outfitters (NTO) runs its entire out of an enterprise data warehouse (EDW), NTO's sales team starting to use Salesforce after a recent implementation, but currently lacks data required to advanced and opportunity to the next stage.

NTO's management has research Salesforce Connect and would like to use It to virtualize and report on data from the EDW within Salesforce. NTO will be running thousands of reports per day across 10 to 15 external objects.

What should a data architect consider before implementing Salesforce Connect for reporting?

- A. Maximum number for records returned
- B. OData callout limits per day
- C. Maximum external objects per org

D. Maximum page size for server-driven paging

**Answer: B ([LEAVE A REPLY](#))**

**NEW QUESTION: 24**

NTO has 1 million customer records spanning 25 years. As part of its new SF project, NTO would like to create a master data management strategy to help preserve the history and relevance of its customer data.

Which 3 activities will be required to identify a successful master data management strategy?

Choose 3 answers:

A. Define the systems of record for critical data

B. Choose a Business Intelligence tool.

C. Create a data archive strategy

D. Identify data to be replicated

E. Install a data warehouse

**Answer: ([SHOW ANSWER](#))**

**NEW QUESTION: 25**

Northern Trail Outfitters (NTO) is in the process of evaluating big objects to store large amounts of asset data from an external system. NTO will need to report on this asset data weekly.

Which two native tools should a data architect recommend to achieve this reporting requirement? (Choose two.)

A. Einstein Analytics

B. Standard reports and dashboards

C. Async SOQL with a custom object

D. Standard SOQL queries

**Answer: A,B ([LEAVE A REPLY](#))**

**NEW QUESTION: 26**

Universal Containers (UC) uses the following Salesforce products:

\* Sales Cloud for customer management.

\* Marketing Cloud for marketing.

\* Einstein Analytics for business reporting.

UC occasionally gets a list of prospects from third-party sources as comma-separated values (CSV) files for marketing purposes. Historically, UC would load these contacts into Lead object in Salesforce and sync to Marketing Cloud to send marketing communications. The number of records in the Lead object has grown over time and has been consuming large amounts of storage in Sales Cloud. UC is looking for recommendations to reduce the storage and advice on how to optimize the marketing process.

What should a data architect recommend to UC in order to immediately avoid storage issues in the future?

- A.** Load the contacts directly to Marketing Cloud and have a reconciliation process to track prospects that are converted to customers.
- B.** Continue to use the existing process to use Lead object to sync with Marketing Cloud and delete Lead records from Sales Cloud after the sync is complete.
- C.** Load the CSV files in Einstein Analytics and sync with Marketing Cloud prior to sending marketing communications.
- D.** Load the CSV files in an external database and sync with Marketing Cloud prior to sending marketing communications.

**Answer: C (LEAVE A REPLY)**

Explanation

### **NEW QUESTION: 27**

Universal Containers (UC) has an Application custom object, which has tens of millions of records created in the past 5 years. UC needs the last 5 years of data to exist in Salesforce at all times for reporting and queries. UC is currently encountering performance issues when reporting and running queries on this Object using date ranges as filters. Which two options can be used to improve report performance?

- A.** Add custom indexes to all fields on Application without a standard index.
- B.** Add custom indexes to the Date fields used for filtering the report.
- C.** Ask support to create a skinny table for Application with the necessary reporting fields.
- D.** Run multiple reports to get different pieces of the data and combine them.

**Answer: B,C (LEAVE A REPLY)**

### **NEW QUESTION: 28**

NTO has multiple systems across its enterprise landscape including salesforce, with disparate version the customer records.

In salesforce, the customer is represented by the contact object.

NTO utilizes an MDM solution with these attributes:

1. The MDM solution keeps track of customer master with a master key.
  2. The master key is a map to the record ID's from each external system that customer data is stored within.
  3. The MDM solution provides de-duplication features, so it acts as the single source of truth.
- How should a data architect implement the storage of master key within salesforce?

- A.** Store the master key on the contact object as an external ID (Field for referential imports)
- B.** Create an external object to store the master key with a lookup field to contact.
- C.** Create a custom object to store the master key with a lookup field to contact.
- D.** Store the master key in Heroku postgres and use Heroku connect for synchronization.

**Answer: A (LEAVE A REPLY)**

### **NEW QUESTION: 29**

Universal Containers (UC) has deployed Salesforce to manage Marketing, Sales, and Support efforts in a multi-system ERP environment. After reaching the limits of native reports & dashboards, UC leadership is looking to understand what options can be used to provide more analytical insights. What two approaches should an architect recommend? Choose 2 answers

- A. Setup Audit Trails
- B. Wave Analytics
- C. Weekly Snapshots
- D. AppExchange Apps

**Answer:** ([SHOW ANSWER](#))

### NEW QUESTION: 30

An Architect needs to document the data architecture for a multi-system, enterprise Salesforce implementation.

Which two key artifacts should the Architect use? (Choose two.)

- A. User stories
- B. Integration specification
- C. Non-functional requirements
- D. Data model

**Answer:** B,D ([LEAVE A REPLY](#))

### NEW QUESTION: 31

Universal Containers (UC) is in the process of selling half of its company. As part of this split, UC's main Salesforce org will be divided into two orgs: org A and org B. UC has delivered these requirements to its data architect

1. The data model for Org B will drastically change with different objects, fields, and picklist values.
2. Three million records will need to be migrated from org A to org B for compliance reasons.
3. The migrate will need occur within the next two months, prior to the split.

Which migrate strategy should a data architect use to successfully migrate the data?

- A. Use the Salesforce CLI to query, export, and import
- B. Write a script to use the Bulk API
- C. Use an ETL tool to orchestrate the migration.
- D. Use Data Loader for export and Data Import Wizard for import

**Answer:** ([SHOW ANSWER](#))

**Valid Data-Architecture-And-Management-Designer Dumps** shared by BraindumpsPass.com for Helping Passing Data-Architecture-And-Management-Designer Exam! BraindumpsPass.com now offer the **newest Data-Architecture-And-**

**Management-Designer exam dumps**, the BraindumpsPass.com Data-Architecture-And-Management-Designer exam **questions have been updated** and **answers have been corrected** get the **newest** BraindumpsPass.com Data-Architecture-And-Management-Designer dumps with Test Engine here:

<https://www.braindumpsPass.com/Salesforce/Data-Architecture-And-Management-Designer-practice-exam-dumps.html> (224 Q&As Dumps, **40%OFF Special Discount: Exam-Tests**)

### NEW QUESTION: 32

Get Cloudy Consulting is migrating their legacy system's users and data to Salesforce. They will be creating 15,000 users, 1.5 million Account records, and 15 million Invoice records. The visibility of these records is controlled by a 50 owner and criteria-based sharing rules. Get Cloudy Consulting needs to minimize data loading time during this migration to a new organization.

Which two approaches will accomplish this goal? (Choose two.)

- A. Load all account records, and then load all user records.
- B. Create the users, upload all data, and then deploy the sharing rules.
- C. Defer sharing calculations until the data has finished uploading.
- D. Contact Salesforce to activate indexing before uploading the data.

**Answer: B,C (LEAVE A REPLY)**

### NEW QUESTION: 33

A company uses Salesforce, a cloud-based ERP system, and an on-premise Order Management System (OMS). This company requires a solution that uses Salesforce as the system of record for Leads and the OMS as the system of record for Account and Contacts. Additionally, the company wants Accounts and Contacts to be able to maintain their names in each system (i.e., ""Jane Doe""; in the OMS and ""Jannie Doe"" in Salesforce), but wants to have a consolidated data store which links referenced records across the systems.

Which suggestion should the Architect provide to the company to meet this goal?

- A. Use an integration tool to send OMS Accounts and Contacts to Salesforce.
- B. Have Salesforce poll the OMS nightly and bring in the desired Accounts and Contacts.
- C. Use a Master Data Management strategy to reconcile Leads, Accounts, and Contacts.
- D. Utilize the Streaming API to send Account and Contact data from Salesforce to the OMS.

**Answer: (SHOW ANSWER)**

### NEW QUESTION: 34

Ursa Major Solar provides home installment services to its customers. To track these home installments, the company uses Opportunities. At any given time, the status of the home installments can be one of the

10 values. Currently, Ursa Major Solar has 189,000 Opportunity records.

An Architect needs to create a new field to track home installment status opportunity while also improving data quality and avoiding data skew.

What should the Architect do?

- A. Create a picklist field, values sorted alphabetically.
- B. Create a Master-Detail to custom object InstallmentStatus\_c.
- C. Create a text field and make it an external ID.
- D. Create a Lookup to custom object InstallmentStatus\_c.

**Answer: A (LEAVE A REPLY)**

Explanation

### **NEW QUESTION: 35**

UC is preparing to implement sales cloud and would like to its users to have read only access to an account record if they have access to its child opportunity record. How would a data architect implement this sharing requirement between objects?

- A. Implicit sharing will automatically handle with standard functionality.
- B. Create a criteria-based sharing rule.
- C. Create an owner-based sharing rule.
- D. Add appropriate users to the account team.

**Answer: A (LEAVE A REPLY)**

### **NEW QUESTION: 36**

Get Cloudy Consulting needs to evaluate the completeness and consistency of contact information in Salesforce. Their sales reps often have incomplete information about their accounts and contacts. Additionally, they are not able to interpret the information in a consistent manner. Get Cloudy Consulting has identified certain "key" fields which are important to their sales reps.

What are two actions Get Cloudy Consulting can take to review their data for completeness and consistency? (Choose two.)

- A. Run one report per key field, grouped by that field, to understand its data variability.
- B. Run a process that can fill in default values for blank fields.
- C. Run a report which shows the last time the key fields were updated.
- D. Run a report that shows the percentage of blanks for the important fields.

**Answer: C,D (LEAVE A REPLY)**

### **NEW QUESTION: 37**

Universal Containers is migrating individual customers (B2C) data from legacy systems to Salesforce. There are millions of customers stored as account and contacts in the legacy database.

Which object model should a data architect configure within Salesforce?

- A. Leverage custom person account object in Salesforce
- B. Leverage custom account and contact object in Salesforce

- C. Leverage standard account and contact object in Salesforce
- D. Leverage person account object in Salesforce

**Answer:** ([SHOW ANSWER](#))

**NEW QUESTION: 38**

Universal Containers (UC) is implementing Salesforce and will be using Salesforce to track customer complaints, provide white papers on products, and provide subscription (fee)-based support.

Which license type will UC users need to fulfill UC's requirements?

- A. Salesforce License
- B. Lightning Platform Starter License
- C. Service Cloud License
- D. Sales Cloud License

**Answer:** ([SHOW ANSWER](#))

Explanation/Reference: <https://www.salesforce.com/products/service-cloud/pricing/>

**NEW QUESTION: 39**

Cloud Kicks plans on setting up an external Business Intelligence (BI) system and will extract 1.5 million Contact records. The company wants to avoid timeouts during the export process. What should an Architect recommend to fulfill this request?

- A. Utilize GZIP compression to export the data.
- B. Utilize the Bulk API to export the data.
- C. Utilize the SOAP API to export data.
- D. Schedule a Batch Apex job to export the data.

**Answer:** B ([LEAVE A REPLY](#))

**NEW QUESTION: 40**

UC is planning a massive SF implementation with large volumes of data

a. As part of the org's implementation, several roles, territories, groups, and sharing rules have been configured. The data architect has been tasked with loading all of the required data, including user data, in a timely manner.

What should a data architect do to minimize data load times due to system calculations?

- A. Leverage the Bulk API and concurrent processing with multiple batches
- B. Load the data through data loader, and turn on parallel processing.
- C. Enable defer sharing calculations, and suspend sharing rule calculations
- D. Enable granular locking to avoid "UNABLE \_TO\_LOCK\_ROW" error.

**Answer:** C ([LEAVE A REPLY](#))

**NEW QUESTION: 41**

Cloud Kicks needs to optimize data stewardship engagement for a Salesforce instance.

Before proposing design recommendations, the Data Architect is first assessing relevant areas of Salesforce.

Which three areas are appropriate to assess? (Choose three.)

- A. Assess the sharing model to determine impact on duplicate records.
- B. Assess the metadata xml files for redundant fields to consolidate.
- C. Export the setup audit trail to review what fields are being used.
- D. Determine if any integration points create records in Salesforce.
- E. Run key reports to determine what fields should be required.

**Answer: A,B,E (LEAVE A REPLY)**

#### **NEW QUESTION: 42**

Universal Containers (UC) management has identified a total of ten text fields on the Contact object as important to capture any changes made to these fields, such as who made the change, when they made the change, what is the old value, and what is the new value. UC needs to be able to report on these field data changes within Salesforce for the past 3 months. What are two approaches that will meet this requirement? Choose 2 answers

- A. Write an Apex trigger on Contact after insert event and after update events and store the old values in another custom object.
- B. Create a workflow to evaluate the rule when a record is created and use field update actions to store previous values for these ten fields in ten new fields.
- C. Turn on field Contact object history tracking for these ten fields, then create reports on contact history.
- D. Create a Contact report including these ten fields and Salesforce Id, then schedule the report to run once a day and send email to the admin.

**Answer: (SHOW ANSWER)**

#### **NEW QUESTION: 43**

Get Cloudy Consulting is migrating their legacy system's users and data to Salesforce. They will be creating 15,000 users, 1.5 million Account records, and 15 million Invoice records. The visibility of these records is controlled by a 50 owner and criteria-based sharing rules.

Get Cloudy Consulting needs to minimize data loading time during this migration to a new organization.

Which two approaches will accomplish this goal? (Choose two.)

- A. Contact Salesforce to activate indexing before uploading the data.
- B. Defer sharing calculations until the data has finished uploading.
- C. First, load all account records, and then load all user records.
- D. Create the users, upload all data, and then deploy the sharing rules.

**Answer: B,D (LEAVE A REPLY)**

#### **NEW QUESTION: 44**

UC is implementing sales cloud for patient management and would like to encrypt sensitive patient records being stored in files.

Which solution should a data architect recommend to solve this requirement?

- A. Implement shield platform encryption to encrypt files.
- B. Store files outside of salesforce and access them to real time.
- C. Use classic encryption to encrypt files.
- D. Implement 3rd party App Exchange app to encrypt files.

**Answer: A (LEAVE A REPLY)**

#### **NEW QUESTION: 45**

Universal Containers (UC) provides shipping services to its customers. They use Opportunities to track customer shipments. At any given time, shipping status can be one of the 10 values. UC has 200,000 Opportunity records. When creating a new field to track shipping status on opportunity, what should the architect do to improve data quality and avoid data skew?

- A. Create a text field and make it an external ID.
- B. Create a picklist field, values sorted alphabetically.
- C. Create a Lookup to custom object ShippingStatus c.
- D. Create a Master -Detail to custom object ShippingStatus c.

**Answer: B (LEAVE A REPLY)**

#### **NEW QUESTION: 46**

Universal containers is implementing Salesforce lead management. UC Precure lead data from multiple sources and would like to make sure lead data as company profile and location information. Which solution should a data architect recommend to make sure lead data has both profile and location information? Option

- A. Export data out of Salesforce and send to another team to populate company profile and location data
- B. Ask sales people to search for populating company profile and location data
- C. Run reports to identify records which does not have company profile and location data
- D. Leverage external data providers populate company profile and location data

**Answer: D (LEAVE A REPLY)**

**Valid Data-Architecture-And-Management-Designer Dumps** shared by BraindumpsPass.com for Helping Passing Data-Architecture-And-Management-Designer Exam! BraindumpsPass.com now offer the **newest Data-Architecture-And-Management-Designer exam dumps**, the BraindumpsPass.com Data-Architecture-And-Management-Designer exam **questions have been updated** and **answers have been corrected** get the **newest** BraindumpsPass.com Data-Architecture-And-Management-

Designer dumps with Test Engine here:

<https://www.braindumps.com/Salesforce/Data-Architecture-And-Management-Designer-practice-exam-dumps.html> (224 Q&As Dumps, **40%OFF Special Discount: Exam-Tests**)

#### **NEW QUESTION: 47**

NTO (Northern Trail Outlets) has a complex Salesforce org which has been developed over past 5 years.

Internal users are complaining abt multiple data issues, including incomplete and duplicate data in the org.

NTO has decided to engage a data architect to analyze and define data quality standards.

Which 3 key factors should a data architect consider while defining data quality standards?

Choose 3 answers:

- A. Measure data timeliness and consistency
- B. Define key fields in staging database for data cleansing
- C. Finalize an extract transform load (ETL) tool for data migration
- D. Measure data completeness and accuracy
- E. Define data duplication standards and rules

**Answer: A,D,E (LEAVE A REPLY)**

#### **NEW QUESTION: 48**

Ursa Major Solar has the following two systems:

- Salesforce
- On-premise ERP system

Opportunity records need to be copied to the ERP once they reach a Closed/Won Stage. The Opportunity record in the ERP system will be read-only for all fields copied in from Salesforce.

An Architect needs to recommend a real-time approach that fulfills these requirements.

Which recommendation is appropriate?

- A. Implement a Master Data Management system to determine system of record.
- B. Have an ERP poll Salesforce nightly and bring in the desired Opportunities.
- C. Implement an hourly integration to send Salesforce Opportunities to the ERP system.
- D. Create a workflow rule with Outbound Messaging that sends Opportunity data.

**Answer: D (LEAVE A REPLY)**

#### **NEW QUESTION: 49**

An architect is planning on having different batches to load one million Opportunities into Salesforce using the Bulk API in parallel mode. What should be considered when loading the Opportunity records?

- A. Group batches by the AccountId field.
- B. Order batches by Auto -number field.

- C. Sort batches by Name field values.
- D. Create indexes on Opportunity object text fields.

**Answer: B (LEAVE A REPLY)**

**NEW QUESTION: 50**

Universal Containers is setting up an external Business Intelligence (BI) system and wants to extract 1,000,000 Contact records. What should be recommended to avoid timeouts during the export process?

- A. Utilize the Bulk API to export the data.
- B. Use GZIP compression to export the data.
- C. Schedule a Batch Apex job to export the data.
- D. Use the SOAP API to export data.

**Answer: B (LEAVE A REPLY)**

**NEW QUESTION: 51**

Universal Containers has a rollup summary field on account to calculate the number of contacts associated with an account. During the account load, Salesforce is throwing an "UNABLE\_TO\_LOCK\_ROW" error.

Which solution should a data architect recommend to resolve the error?

- A. Perform a batch job in serial mode and reduce the batch size.
- B. Defer rollup summary field calculation during data migration.
- C. Perform a batch job in parallel mode and reduce the batch size.
- D. Leverage Data Loader's platform API to load data.

**Answer: A (LEAVE A REPLY)**

**NEW QUESTION: 52**

All accounts and opportunities are created in Salesforce. Salesforce is integrated with three systems:

- \* An ERP system feeds order data into Salesforce and updates both Account and Opportunity records.
- \* An accounting system feeds invoice data into Salesforce and updates both Account and Opportunity records.
- \* A commission system feeds commission data into Salesforce and updates both Account and Opportunity records.

How should the architect determine which of these systems is the system of record?

- A. Whatever system updates the attribute or object should be the system of record for that field or object.
- B. Account and opportunity data originates in Salesforce, and therefore Salesforce is the system of record.
- C. Whatever integration data flow runs last will, by default, determine which system is the system of record.

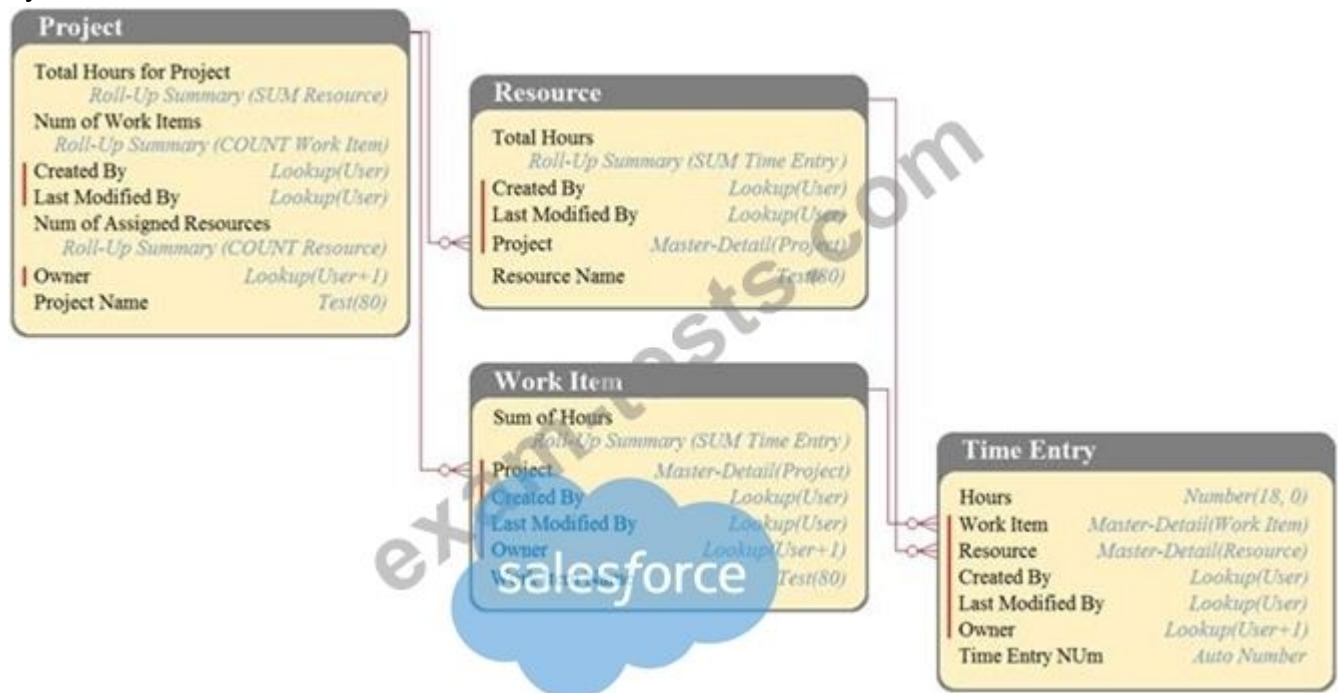
D. Data flows should be reviewed with the business users to determine the system of record per object or field.

**Answer: D (LEAVE A REPLY)**

### NEW QUESTION: 53

DreamHouse Realty has a data model as shown in the image. The Project object has a private sharing model, and it has Roll-Up summary fields to calculate the number of resources assigned to the project, total hours for the project, and the number of work items associated to the project.

There will be a large amount of time entry records to be loaded regularly from an external system into Salesforce.



What should the Architect consider in this situation?

- A. Calculate summary values instead of Roll-Up by using triggers.
- B. Calculate summary values instead of Roll-Up by using workflow.
- C. Load all data after deferring sharing calculations.
- D. Load all data using external IDs to link to parent records.

**Answer: C (LEAVE A REPLY)**

### NEW QUESTION: 54

Universal Containers (UC) is migrating from an on-premise homegrown customer relationship management (CRM) system- During analysis, UC users highlight a pain point that there are multiple versions of many customers.

What should the data architect do for a successful migration to mitigate the pain point?

- A. Have the users manually clean the data in the old system prior to migration.
- B. Hire an intern manually de-duplicate the records after migrating to Salesforce.
- C. Store the data in a staging database, and de-duplicate identical records.

D. Migrate the data as is, and use Salesforce's de-duplicating feature.

**Answer: C (LEAVE A REPLY)**

#### **NEW QUESTION: 55**

NTO uses salesforce to manage relationships and track sales opportunities. It has 10 million customers and

100 million opportunities. The CEO has been complaining 10 minutes to run and sometimes failed to load, throwing a time out error.

Which 3 options should help improve the dashboard performance?

Choose 3 answers:

A. Run the dashboard for CEO and send it via email.

B. Reduce the amount of data queried by archiving unused opportunity records.

C. De-normalize the data by reducing the number of joins.

D. Use selective queries to reduce the amount of data being returned.

E. Remove widgets from the dashboard to reduce the number of graphics loaded.

**Answer: B,C,D (LEAVE A REPLY)**

#### **NEW QUESTION: 56**

Universal Containers (UC) is facing data quality issues where Sales Reps are creating duplicate customer accounts, contacts, and leads. UC wants to fix this issue immediately by prompting users about a record that possibly exists in Salesforce. UC wants a report regarding duplicate records. What would be the recommended approach to help UC start immediately?

A. Create a duplicate rule for account, lead, and contact, use standard matching rules for these objects, and set the action to block for both creates and edits.

B. Create a before insert and update trigger on account, contact, and lead, and send an error if a duplicate is found using a custom matching criteria.

C. Create an after insert and update trigger on the account, contact and lead, and send an error if a duplicate is found using a custom matching criteria.

D. Create a duplicate rule for account, lead, and contact, use standard matching rules for these objects, and set the action to report and alert for both creates and edits.

**Answer: D (LEAVE A REPLY)**

#### **NEW QUESTION: 57**

Ursa Major Solar plans to use Salesforce to manage their sales organization. However, the company has legacy account data from two aging systems that must be migrated into Salesforce. The Chief Technology Officer (CTO) at Ursa Major Solar is concerned about data duplication and needs it minimized.

What are two design considerations an Architect should take in this scenario? (Choose two.)

A. Before importing into Salesforce, clean the data.

B. Use Salesforce matching and duplicate rules.

- C. Import the data concurrently.
- D. Check and prevent duplicates by using a workflow.

**Answer: A,B (LEAVE A REPLY)**

**NEW QUESTION: 58**

In a disparate multi -system ERP environment, where Salesforce is being deployed, what are two techniques that should be used to maintain data synchronization between systems?

Choose 2 answers

- A. Establish an MDM strategy to outline a single source of truth.
- B. Integrate Salesforce with the ERP environment.
- C. Build synchronization reports and dashboards.
- D. Use workbench to update files within systems.

**Answer: A,C (LEAVE A REPLY)**

**NEW QUESTION: 59**

UC has one SF org (Org A) and recently acquired a secondary company with its own Salesforce org (Org B).

UC has decided to keep the orgs running separately but would like to bidirectionally share opportunities between the orgs in near-real time.

Which 3 options should a data architect recommend to share data between Org A and Org B?

Choose 3 answers.

- A. Develop an Apex class that pushes opportunity data between orgs daily via the Apex schedule.
- B. Leverage middleware tools to bidirectionally send Opportunity data across orgs.
- C. Use Salesforce Connect and the cross-org adapter to visualize Opportunities into external objects
- D. Leverage Heroku Connect and Heroku Postgres to bidirectionally sync Opportunities.
- E. Install a 3rd party AppExchange tool to handle the data sharing

**Answer: A,B,C (LEAVE A REPLY)**

**NEW QUESTION: 60**

Universal Containers (UC) is migrating from a legacy system to Salesforce CRM, UC is concerned about the quality of data being entered by users and through external integrations.

Which two solution should a data architect recommend to mitigate data quality issues?

- A. Leverage validation rules and workflows.
- B. Leverage Apex to validate the format of data being entered via a mobile device.
- C. Leverage picklist and lookup fields where possible
- D. Leverage third-party- AppExchange tools

**Answer: A,C (LEAVE A REPLY)**

### NEW QUESTION: 61

DreamHouse Realty has a legacy system that captures Branch Offices and Transactions. DreamHouse Realty has 15 Branch Offices. Transactions can relate to any Branch Office. DreamHouse Realty has created hundreds of thousands of Transactions per year. A Data Architect needs to denormalize this data model into a single Transaction object with a Branch Office picklist.

What are two important considerations for the Data Architect in this scenario? (Choose two.)

- A. Standard list view in-line editing.
- B. Limitations on master-detail relationships.
- C. Bulk API limitations on picklist fields.
- D. Limitations on Org data storage.

**Answer: C,D (LEAVE A REPLY)**

**Valid Data-Architecture-And-Management-Designer Dumps** shared by BraindumpsPass.com for Helping Passing Data-Architecture-And-Management-Designer Exam! BraindumpsPass.com now offer the **newest Data-Architecture-And-Management-Designer exam dumps**, the BraindumpsPass.com Data-Architecture-And-Management-Designer exam **questions have been updated** and **answers have been corrected** get the **newest** BraindumpsPass.com Data-Architecture-And-Management-Designer dumps with Test Engine here:  
<https://www.braindumpsPass.com/Salesforce/Data-Architecture-And-Management-Designer-practice-exam-dumps.html> (224 Q&As Dumps, **40%OFF Special Discount: Exam-Tests**)

### NEW QUESTION: 62

Universal Containers keeps its Account data in Salesforce and its Invoice data in a third - party ERP system.

They have connected the Invoice data through a Salesforce external object. They want data from both Accounts and Invoices visible in one report in one place. What two approaches should an architect suggest for achieving this solution? Choose 2 answers

- A. Create a Visualforce page combining Salesforce Account data and Invoice external object data.
- B. Create a separate Salesforce report for Accounts and Invoices and combine them in a dashboard.
- C. Create a report combining data from the Account standard object and the Invoices external object.
- D. Create a report in an external system combining Salesforce Account data and Invoice data from the ERP.

**Answer: A,D (LEAVE A REPLY)**

**NEW QUESTION: 63**

A data architect has been tasked with optimizing a data stewardship engagement for a Salesforce instance. Which three areas of Salesforce should the architect review before proposing any design recommendation?

Choose 3 answers

- A. Review the sharing model to determine impact on duplicate records.
- B. Review the metadata XML files for redundant fields to consolidate.
- C. Determine if any integration points create records in Salesforce.
- D. Export the setup audit trail to review what fields are being used.
- E. Run key reports to determine what fields should be required.

**Answer: A,B,E ([LEAVE A REPLY](#))**

**NEW QUESTION: 64**

Universal Containers (UC) has users complaining about reports timing out or simply taking too long to run. What two actions should the data architect recommend to improve the reporting experience? Choose 2 answers

- A. Create one skinny table per report.
- B. Index key fields used in report criteria.
- C. Enable Divisions for large data objects.
- D. Share each report with fewer users.

**Answer: A,B ([LEAVE A REPLY](#))**

**NEW QUESTION: 65**

UC is having issues using Informatica Cloud Loader to export +10M Order records. Each Order record has 10 Order Line Items. What two steps can you take to help correct this? Choose two answers.

- A. Use PK Chunking
- B. Export Bulk API in parallel mode
- C. Limit Batch to 10K records
- D. Export in multiple batches

**Answer: ([SHOW ANSWER](#))**

**NEW QUESTION: 66**

A large retail company has recently chosen Salesforce as its CRM solution. They have the following record counts:

- \* 2,500,000 Accounts
- \* 25,000,000 Contacts

When doing an initial performance test, the data architect noticed an extremely slow response for reports and list views.

What should a data architect do to solve the performance issues?

- A. Limit data loading to the 2,000 most recently created records
- B. Load only data that the user is permitted to access
- C. Create a Skinny Table to represent Account and Contact objects
- D. Add Custom Indexes on frequently searched Account and Contact objects fields

**Answer: A (LEAVE A REPLY)**

**NEW QUESTION: 67**

To avoid creating duplicate Contacts, a customer frequently uses Data Loader to upsert Contact records into Salesforce. What common error should the data architect be aware of when using upsert?

- A. Errors with using the wrong external Id will cause the load to fail.
- B. Errors with records being updated and inserted in the same CSV file.
- C. Errors when a duplicate Contact name is found cause upsert to fail.
- D. Errors with duplicate external Id values within the same CSV file.

**Answer: D (LEAVE A REPLY)**

**NEW QUESTION: 68**

Universal Containers (UC) requires 2 years of customer related cases to be available on SF for operational reporting. Any cases older than 2 years and upto 7 years need to be available on demand to the Service agents.

UC creates 5 million cases per yr.

Which 2 data archiving strategies should a data architect recommend? Choose 2 options:

- A. Sync cases older than 2 years to an external database, and provide access to Service agents to the database
- B. Use Heroku and external objects to display cases older than 2 years and bulk API to hard delete from Salesforce.
- C. Use Big objects for cases older than 2 years, and use nightly batch to move them.
- D. Use custom objects for cases older than 2 years and use nightly batch to move them.

**Answer: (SHOW ANSWER)**

**NEW QUESTION: 69**

In a Salesforce org used to manage Contacts, what two options should be considered to maintain data quality? Choose 2 answers

- A. Use workflow to delete duplicate records.
- B. Use the private sharing model.
- C. Use Salesforce duplicate management.
- D. Use validation rules on new record create and edit.

**Answer: C,D (LEAVE A REPLY)**

**NEW QUESTION: 70**

Universal Containers (UC) wants to ensure their data on 100,000 Accounts pertaining mostly to US-based companies is enriched and cleansed on an ongoing basis. UC is looking for a solution that allows easy monitoring of key data quality metrics. What should be the recommended solution to meet this requirement?

- A. Use declarative approach by installing and configuring Data.com Prospector to monitor Account data quality.
- B. Implement an Apex Trigger on Account that queries a third-party data quality API to monitor Account data quality.
- C. Use a declarative approach by installing and configuring Data.com Clean to monitor Account data quality.
- D. Implement Batch Apex that calls out a third-party data quality API in order to monitor Account data quality.

**Answer: C (LEAVE A REPLY)**

#### **NEW QUESTION: 71**

NTO (Northern Trail Outlets) has a complex Salesforce org which has been developed over past 5 years. Internal users are complaining abt multiple data issues, including incomplete and duplicate data in the org. NTO has decided to engage a data architect to analyze and define data quality standards.

Which 3 key factors should a data architect consider while defining data quality standards?

Choose 3 answers:

- A. Measure data timeliness and consistency
- B. Finalize an extract transform load (ETL) tool for data migration
- C. Measure data completeness and accuracy
- D. Define key fields in staging database for data cleansing
- E. Define data duplication standards and rules

**Answer: A,C,E (LEAVE A REPLY)**

#### **NEW QUESTION: 72**

UC has a legacy client server app that as a relational data base that needs to be migrated to salesforce.

What are the 3 key actions that should be done when data modeling in salesforce?

Choose 3 answers:

- A. Implement legacy data model within salesforce using custom fields.
- B. Map legacy data to salesforce objects.
- C. Identify data elements to be persisted in salesforce.
- D. Map legacy data to salesforce custom objects.
- E. Work with legacy application owner to analysis legacy data model.

**Answer: (SHOW ANSWER)**

#### **NEW QUESTION: 73**

Cloud Kicks has the following requirements:

- Data needs to be sent from Salesforce to an external system to generate invoices from their Order Management System (OMS).
- A Salesforce administrator must be able to customize which fields will be sent to the external system without changing code.

What are two approaches for fulfilling these requirements? (Choose two.)

- A.** An ObjectField to determine which fields to send in an HTTP callout.
- B.** Turn on the field-level security permissions for the fields to send.
- C.** A Field Set that determines which fields to send in an HTTP callout.
- D.** An Outbound Message to determine which fields to send to the OMS.

**Answer:** ([SHOW ANSWER](#))

Explanation

#### **NEW QUESTION: 74**

Cloud Kicks currently has a Public Read/Write sharing model for the company's Contacts. Cloud Kicks management team requests that only the owner of a contact record be allowed to delete that contact.

What should an Architect do to meet these requirements?

- A.** Check if the current user is NOT the owner by creating a "before delete" trigger.
- B.** Check if the current user is NOT the owner by creating a validation rule on the Contact object.
- C.** Set the Sharing settings as Public Read Only for the Contact object.
- D.** Set the profile of the users to remove delete permission from the Contact object.

**Answer:** ([SHOW ANSWER](#))

#### **NEW QUESTION: 75**

DreamHouse Realty has a Salesforce org that is used to manage Contacts.

What are two things an Architect should consider using to maintain data quality in this situation? (Choose two.)

- A.** Use the private sharing model.
- B.** Use Salesforce duplicate management.
- C.** Use validation rules on new record create and edit.
- D.** Use workflow to delete duplicate records.

**Answer:** **B,C** ([LEAVE A REPLY](#))

#### **NEW QUESTION: 76**

Ursa Major Solar is performance testing a Lightning Platform application.

Which two statements are true about this testing? (Choose two.)

- A.** A performance test plan must be created and submitted to Salesforce customer support.
- B.** Application performance benchmarked in a sandbox can also be expected in production.
- C.** Applications with highly customized code or large volumes should be performance tested.

D. Every Lightning Platform application must be performance tested in a sandbox as well as production.

**Answer: A,C (LEAVE A REPLY)**

**Valid Data-Architecture-And-Management-Designer Dumps** shared by BraindumpsPass.com for Helping Passing Data-Architecture-And-Management-Designer Exam! BraindumpsPass.com now offer the **newest Data-Architecture-And-Management-Designer exam dumps**, the BraindumpsPass.com Data-Architecture-And-Management-Designer exam **questions have been updated** and **answers have been corrected** get the **newest** BraindumpsPass.com Data-Architecture-And-Management-Designer dumps with Test Engine here:

<https://www.braindumps.com/Salesforce/Data-Architecture-And-Management-Designer-practice-exam-dumps.html> (224 Q&As Dumps, **40%OFF Special Discount: Exam-Tests**)

**NEW QUESTION: 77**

Which two best practices should be followed when using SOSL for searching?

- A. Use searches against single Objects for greater speed and accuracy.
- B. Use SOSL option to ignore custom indexes as search fields are pre-indexed.
- C. Keep searches specific and avoid wildcards where possible.
- D. Use Find in "ALL FIELDS" for faster searches.

**Answer: C,D (LEAVE A REPLY)**

**NEW QUESTION: 78**

Universal Containers (UC) is implementing Salesforce and will be using Salesforce to track customer complaints, provide white papers on products, and provide subscription based support.

Which license type will UC users need to fulfill UC's requirements?

- A. Salesforce License
- B. Lightning Platform Starter License
- C. Service Cloud License
- D. Sales Cloud License

**Answer: C (LEAVE A REPLY)**

**NEW QUESTION: 79**

A Customer is migrating 10 million order and 30 million order lines into Salesforce using Bulk API. The Engineer is experiencing time-out errors or long delays querying parents order IDs in Salesforce before importing related order line items. What is the recommended solution?

- A. Leverage a sequence of numbers on the imported orders to import related order lines.

- B. Leverage Batch Apex to update order ID on related order lines after import.
- C. Leverage an External ID from source system orders to import related order lines.
- D. Query only indexed ID field values on the imported order to import related order lines.

**Answer:** ([SHOW ANSWER](#))

#### **NEW QUESTION: 80**

Which three options can prevent your SOQL queries from being selective?

- A. Using a custom index on a deterministic formula field.
- B. Performing large loads and deletions.
- C. Using NOT and != operators.
- D. Using leading % wildcards.
- E. Using trailing % wildcards.

**Answer:** A,C,D ([LEAVE A REPLY](#))

#### **NEW QUESTION: 81**

Universal Containers (UC) management has identified a total of ten text fields on the Contact object as important to capture any changes made to these fields, such as who made the change, when they made the change, what is the old value, and what is the new value. UC needs to be able to report on these field data changes within Salesforce for the past 3 months. What are two approaches that will meet this requirement? Choose 2 answers

- A. Create a Contact report including these ten fields and Salesforce Id, then schedule the report to run once a day and send email to the admin.
- B. Write an Apex trigger on Contact after insert event and after update events and store the old values in another custom object.
- C. LII Turn on field Contact object history tracking for these ten fields, then create reports on contact history.
- D. Create a workflow to evaluate the rule when a record is created and use field update actions to store previous values for these ten fields in ten new fields.

**Answer:** ([SHOW ANSWER](#))

#### **NEW QUESTION: 82**

Universal Containers (UC) is a major supplier of office supplies. Some products are produced by UC and some by other manufacturers. Recently, a number of customers have complained that product descriptions on the invoices do not match the descriptions in the online catalog and on some of the order confirmations (e.g., "ballpoint pen" in the catalog and "pen" on the invoice, and item color labels are inconsistent: "what vs. "White" or "blk" vs. "Black"). All product data is consolidated in the company data warehouse and pushed to Salesforce to generate quotes and invoices. The online catalog and webshop is a Salesforce Customer Community solution. What is a correct technique UC should use to solve the data inconsistency?

- A. Build Apex Triggers in Salesforce that ensure products have the correct names and labels after data is loaded into salesforce.
- B. Change integration to let product master systems update product data directly in Salesforce via the Salesforce API.
- C. Define a data taxonomy for product data and apply the taxonomy to the product data in the data warehouse.
- D. Add custom fields to the Product standard object in Salesforce to store data from the different source systems.

**Answer:** [\(SHOW ANSWER\)](#)

### **NEW QUESTION: 83**

Universal Containers (UC) has implemented Salesforce, UC is running out of storage and needs to have an archiving solution, UC would like to maintain two years of data in Salesforce and archive older data out of Salesforce.

Which solution should a data architect recommend as an archiving solution?

- A. Build a batch job to move all records off platform, and delete all records from Salesforce.
- B. Build a batch job to move two-year-old records off platform, and delete records from Salesforce.
- C. Build a batch job to move all records off platform, and delete old records from Salesforce.
- D. Use a third-party backup solution to backup all data off platform.

**Answer:** [D \(LEAVE A REPLY\)](#)

### **NEW QUESTION: 84**

Universal Containers has deployed Salesforce for case management. The company is having difficulty understanding what percentage of cases are resolved from the initial call to their support organization. What first step is recommended to implement a reporting solution to measure the support reps case closure rates?

- A. Create Contact and Opportunity Reports and Dashboards.
- B. Enable field history tracking on the Case object.
- C. Install AppExchange packages for available reports.
- D. Create a report on Case analytic snapshots.

**Answer:** [B \(LEAVE A REPLY\)](#)

### **NEW QUESTION: 85**

A customer is operating in a highly regulated industry and is planning to implement SF. The customer information maintained in SF, includes the following:

- \* Personally identifiable information (PII)
- \* IP restrictions on profiles organized by Geographic location
- \* Financial records that need to be private and accessible only by the assigned Sales associate.
- \* User should not be allowed to export information from Salesforce.

Enterprise security has mandate access to be restricted to users within a specific geography and detail monitoring of user activity. Which 3 Salesforce shield capabilities should a data architect recommend? Choose

3 answers:

- A. Encrypt Sensitive Customer information maintained in SF.
- B. Restrict access to SF from users outside specific geography
- C. Transaction security policies to prevent export of SF Data.
- D. Prevent Sales users access to customer PII information
- E. Event monitoring to monitor all user activities

**Answer: A,B,C ([LEAVE A REPLY](#))**

### **NEW QUESTION: 86**

UC has millions of case records with case history and SLA dat

a. UC's compliance team would like historical cases to be accessible for 10 years for Audit purpose.

What solution should a data architect recommend?

- A. Archive Case data using Salesforce Archiving process
- B. Use a custom Big object to store archived case data.
- C. Use a custom object to store archived case data.
- D. Purchase more data storage to support case object

**Answer: ([SHOW ANSWER](#))**

### **NEW QUESTION: 87**

Northern Trail Outfitter has implemented Salesforce for its associates nationwide, Senior management is concerned that the executive dashboard are not reliable for their real-time decision-making. On analysis , the team the following issues with data entered in Salesforce. Information in certain records is incomplete.

Incorrect entry in certain fields causes records to be excluded in report fitters.

Duplicate entries cause incorrect counts.

Which three steps should a data architect recommend to address the issues?

- A. Leverage Salesforce features, such as validate rules, to avoid incomplete and incorrect records.
- B. Explore third-party data providers to enrich and augment information entered in salesforce.
- C. Build a sales data warehouse with purpose-build data marts for dashboards and senior management reporting.
- D. Periodically export data to cleanse data and import them back into Salesforce for executive reports.
- E. design and implement data-quality dashboard to monitor and act on records that are incomplete or incorrect

**Answer: A,B,C ([LEAVE A REPLY](#))**

**NEW QUESTION: 88**

Cloud Kicks has the following requirements:

- Data needs to be sent from Salesforce to an external system to generate invoices from their Order Management System (OMS).
- A Salesforce administrator must be able to customize which fields will be sent to the external system without changing code.

What are two approaches for fulfilling these requirements? (Choose two.)

- A.** A set<subjectFieldset> to determine which fields to send in an HTTP callout.
- B.** Enable the field -level security permissions for the fields to send.
- C.** A Field Set that determines which fields to send in an HTTP callout.
- D.** An Outbound Message to determine which fields to send to the OMS.

**Answer: C,D (LEAVE A REPLY)**

**NEW QUESTION: 89**

Northern Trail Outfitters (NTO) has a variety of customers that include householder, businesses, and individuals.

The following conditions exist within its system:

NTO has a total of five million customers.

Duplicate records exist, which is replicated across many systems, including Salesforce.

Given these conditions, there is a lack of consistent presentation and clear identification of a customer record.

Which three option should a data architect perform to resolve the issues with the customer data?

- A.** Duplicate customer records across the system and provide a two-way sync of data between the systems.
- B.** Use Salesforce CDC to sync customer data cross all systems to keep customer record in sync.
- C.** Create a unique global customer ID for each customer and store that in all system for referential identity.
- D.** Invest in data duplicate tool to de-dupe and merge duplicate records across all systems.
- E.** Create a customer master database external to Salesforce as a system of truth and sync the customer data with all systems.

**Answer: C,D,E (LEAVE A REPLY)**

**NEW QUESTION: 90**

Get Cloud Consulting needs to integrate two different systems with customer records into the Salesforce Account object. So that no duplicate records are created in Salesforce, Master Data Management will be used.

An Architect needs to determine which system is the system of record on a field level.

What should the Architect do to achieve this goal?

- A. The database schema for each external system should be reviewed, and fields with different names should always be separate fields in Salesforce.
- B. Key stakeholders should review any fields that share the same purpose between systems to see how they will be used in Salesforce.
- C. Any field that is an input field in either external system will be overwritten by the last record integrated and can never have a system of record.
- D. Master Data Management systems determine system of record, and the Architect doesn't have to think about what data is controlled by what system.

**Answer: A (LEAVE A REPLY)**

#### **NEW QUESTION: 91**

Universal Containers has a legacy system that captures Conferences and Venues. These Conferences can occur at any Venue. They create hundreds of thousands of Conferences per year. Historically, they have only used 20 Venues. Which two things should the data architect consider when denormalizing this data model into a single Conference object with a Venue picklist? Choose 2 answers

- A. Bulk API limitations on picklist fields.
- B. Limitations on master -detail relationships.
- C. Standard list view in -line editing.
- D. Org data storage limitations.

**Answer: A,C (LEAVE A REPLY)**

**Valid Data-Architecture-And-Management-Designer Dumps** shared by BraindumpsPass.com for Helping Passing Data-Architecture-And-Management-Designer Exam! BraindumpsPass.com now offer the **newest Data-Architecture-And-Management-Designer exam dumps**, the BraindumpsPass.com Data-Architecture-And-Management-Designer exam **questions have been updated** and **answers have been corrected** get the **newest** BraindumpsPass.com Data-Architecture-And-Management-Designer dumps with Test Engine here:

<https://www.braindumpsPass.com/Salesforce/Data-Architecture-And-Management-Designer-practice-exam-dumps.html> (224 Q&As Dumps, **40%OFF Special Discount:**

**Exam-Tests**)

#### **NEW QUESTION: 92**

Universal Containers has a large volume of Contact data going into Salesforce.com. There are 100,000 existing contact records. 200,000 new contacts will be loaded. The Contact object has an external ID field that is unique and must be populated for all existing records. What should the architect recommend to reduce data load processing time?

- A. Load new records via the Insert operation and existing records via the Update operation.

- B. Load Contact records together using the Streaming API via the Upsert operation.
- C. Load all records via the Upsert operation to determine new records vs. existing records.
- D. Delete all existing records, and then load all records together via the Insert operation.

**Answer: A (LEAVE A REPLY)**

### NEW QUESTION: 93

Get Cloudy Consulting uses an invoicing system that has specific requirements. One requirement is that attachments associated with the Invoice\_c custom object be classified by Types (i.e., "Purchase Order", "Receipt", etc.) so that reporting can be performed on invoices showing the number of attachments grouped by Type.

What should an Architect do to categorize the attachments to fulfill these requirements?

- A. Create a custom object related to the Invoice object with a picklist field for the Type.
- B. Add a ContentType picklist field to the Attachment layout and create additional picklist options.
- C. Add additional options to the standard ContentType picklist field for the Attachment object.
- D. Create a custom picklist field for the Type on the standard Attachment object with the values.

**Answer: A (LEAVE A REPLY)**

### NEW QUESTION: 94

Cloud Kicks has the following requirements:

- They want to automatically archive all inactive Account data that is older than 3 years.
- The information does not need to remain accessible within the application.

Which two approaches should the Architect recommend to meet this requirement? (Choose two.)

- A. Export the data by using the Force.com Workbench.
- B. Schedule jobs to export and delete using the Data Loader.
- C. Schedule a weekly export file from the Salesforce UI.
- D. Schedule jobs to export and delete using an ETL tool.

**Answer: B,D (LEAVE A REPLY)**

Explanation/Reference:

### NEW QUESTION: 95

Get Cloudy Consulting monitors 15,000 servers, and these servers automatically record their status every

10 minutes. Because of company policy, these status reports must be maintained for 5 years. Managers at Get Cloudy Consulting need access to up to one week's worth of these status reports with all of their details.

An Architect is recommending what data should be integrated into Salesforce and for how long it should be stored in Salesforce.

Which two limits should the Architect be aware of? (Choose two.)

- A. Data storage limits
- B. Workflow rule limits
- C. API Request limits
- D. Webservice callout limits

**Answer:** ([SHOW ANSWER](#))

Explanation

#### **NEW QUESTION: 96**

Which two methods should be used when importing Leads into Salesforce to ensure there are no duplicate records? Choose 2 answers

- A. Purchase an AppExchange Lead de -duplication application.
- B. Implement Salesforce Matching and Duplicate Rules.
- C. Run the Salesforce Lead Mass de -duplication tool.
- D. Create a Workflow Rule to check for duplicate records.

**Answer:** ([SHOW ANSWER](#))

#### **NEW QUESTION: 97**

Ursa Major Solar has defined a new Data Quality Plan for their Salesforce data.

Which two approaches should an Architect recommend to enforce the plan throughout the organization? (Choose two.)

- A. Ensure all data is stored in an external system and set up an integration to Salesforce for view-only access.
- B. Enforce critical business processes by using Workflow, Validation Rules, and Apex code.
- C. Schedule a weekly dashboard displaying records that are missing information to be sent to managers for review.
- D. Schedule reports that will automatically catch duplicates and merge or delete the records every week.

**Answer:** B,C ([LEAVE A REPLY](#))

#### **NEW QUESTION: 98**

Cloud Kicks has a Salesforce instance with 12,000 Account records. Managers at the company have noticed similar, but not identical, Account names and addresses.

The Chief Technology Officer (CTO) at Cloud Kicks is concerned about proper data quality.

Which steps should the CTO take to address this issue?

- A. 1. Enable Account de-duplication by creating matching rules in Salesforce.  
2. The system will then mass merge duplicate Accounts.
- B. 1. Run a report.  
2. Find Accounts whose name starts with the same five characters, and merge those Accounts.
- C. 1. Have the Account Owner clean their Accounts' addresses.  
2. Merge Accounts with the same address.

- D.** 1. Use a service to standardize Account addresses.  
2. Use a 3rd-party tool to merge Accounts based on rules.

**Answer: A (LEAVE A REPLY)**

**NEW QUESTION: 99**

Universal Containers (UC) is expecting to have nearly 5 million shipment records in its Salesforce org. Each shipment record has up to 10 child shipment item records. The Shipment custom object has an Organization-wide Default (OWD) sharing model set to Private and the Shipment Item custom object has a Master-Detail relationship to Shipment. There are 25 sharing rules set on the Shipment custom object, which allow shipment records to be shared to each of UC's 25 business areas around the globe. These sharing rules use public groups, one for each business area plus a number of groups for management and support roles. UC has a high turnover of Sales Reps and often needs to move Sales Reps between business areas in order to meet local demand. What feature would ensure that performance, when moving Sales Reps between regions, remains adequate while meeting existing requirements?

- A.** Implement data archiving for old Shipment records.
- B.** Contact Salesforce to enable Defer Sharing Rules
- C.** Configure shipment OWD to Public Read/Write.
- D.** Contact Salesforce to create Skinny tables on Shipment.

**Answer: B (LEAVE A REPLY)**

**NEW QUESTION: 100**

DreamHouse Realty has 15 million records in the Order\_c custom object. When running a bulk query, the query times out.

What should be considered to address this issue?

- A.** Metadata API
- B.** Tooling API
- C.** PK Chunking
- D.** Streaming API

**Answer: (SHOW ANSWER)**

**NEW QUESTION: 101**

UC is building a salesforce application to track contacts and their respective conferences that they have attended with the following requirements:

- 1. Contacts will be stored in the standard contact object.
- 2. Conferences will be stored in a custom conference\_\_c object.
- 3. Each contact may attend multiple conferences and each conference may be related to multiple contacts.

How should a data architect model the relationship between the contact and conference objects?

- A. Create a master detail relationship field on the Contact object.
- B. Create a master detail relationship field on the Conference object.
- C. Create a lookup relationship field on contact object.
- D. Implement a Contact Conference junction object with master detail relationship to both contact and conference\_\_c.

**Answer: D ([LEAVE A REPLY](#))**

#### **NEW QUESTION: 102**

Universal Containers is experiencing frequent and persistent group membership locking issues that severely restricts its ability to manage manual and a automated updates at the same time.

What should a data architect do in order to restore the issue?

- A. Enable implicit sharing
- B. Enable defer sharing calculation
- C. Enable parallel sharing rule calculation.
- D. Enable granular locking

**Answer: ([SHOW ANSWER](#))**

#### **NEW QUESTION: 103**

Northern Trail Outfitters (NTO) has the following systems:

Customer master-source of truth for customer information

Service cloud-customer support

Marketing cloud-marketing support

Enterprise data warehouse-business reporting

The customer data is duplicated across all these system and are not kept in sync. Customers are also complaining that they get repeated marketing emails and have to call into update their information.

NTO is planning to implement master data management (MDM) solution across the enterprise.

Which three data will an MDM tool solve?

Choose 3 answers

- A. Data duplication
- B. Data accuracy and quality
- C. Data loss and recovery
- D. Data standardization
- E. Data completeness

**Answer: A,B,D ([LEAVE A REPLY](#))**

#### **NEW QUESTION: 104**

Universal Containers (UC) loads bulk leads and campaigns from third-party lead aggregators on a weekly and monthly basis. The expected lead record volume is 500K records per week,

and the expected campaign records volume is 10K campaigns per week. After the upload, Lead records are shared with various sales agents via sharing rules and added as Campaign members via Apex triggers on Lead creation. UC agents work on leads for 6 months, but want to keep the records in the system for at least 1 year for reference. Compliance requires them to be stored for a minimum of 3 years. After that, data can be deleted. What statement is true with respect to a data archiving strategy for UC?

- A. UC can leverage a "tier"-based approach to classify the record storage need.
- B. UC can leverage recycle bin capability, which guarantees record storage for 15 days after deletion.
- C. UC can leverage the Salesforce Data Backup and Recovery feature for data archival needs.
- D. UC can store long-term lead records in custom storage objects to avoid counting against storage limits.

**Answer: A ([LEAVE A REPLY](#))**

#### **NEW QUESTION: 105**

Members of DreamHouse Realty sales team are reporting that searches are yielding too many irrelevant, outdated records. Management requires that data for historical reporting. DreamHouse Realty has enough data storage.

In this situation, which strategy should a data architect use to ensure a better user experience for the Sales Reps?

- A. Hide old data from Sales Reps by setting data access to Private.
- B. Archive and purge old data from Salesforce on a monthly basis.
- C. Use Batch Apex to archive old data on a rolling nightly basis.
- D. Hide old data from Sales Reps by creating a Permission Set.

**Answer: B ([LEAVE A REPLY](#))**

Explanation/Reference:

#### **NEW QUESTION: 106**

Universal Containers is creating a new B2C service offering for consumers to ship goods across continents. This is in addition to their well-established B2B offering. Their current Salesforce org uses the standard Account object to track B2B customers. They are expecting to have over 50,000,000 consumers over the next five years across their 50 business regions. B2C customers will be individuals. Household data is not required to be stored. What is the recommended data model for consumer account data to be stored in Salesforce?

- A. Use the Account object with Person Accounts and a new B2C page layout.
- B. Create a new picklist value for B2C customers on the Account Type field.
- C. Use the Account object with a newly created Record Type for B2C customers.
- D. Use 50 umbrella Accounts for each region, with customers as associated Contacts.

**Answer: ([SHOW ANSWER](#))**

**Valid Data-Architecture-And-Management-Designer Dumps** shared by BraindumpsPass.com for Helping Passing Data-Architecture-And-Management-Designer Exam! BraindumpsPass.com now offer the **newest Data-Architecture-And-Management-Designer exam dumps**, the BraindumpsPass.com Data-Architecture-And-Management-Designer exam **questions have been updated** and **answers have been corrected** get the **newest** BraindumpsPass.com Data-Architecture-And-Management-Designer dumps with Test Engine here:

<https://www.braindumpsPass.com/Salesforce/Data-Architecture-And-Management-Designer-practice-exam-dumps.html> (224 Q&As Dumps, **40%OFF Special Discount: Exam-Tests**)

#### **NEW QUESTION: 107**

The head of sales at Get Cloudy Consulting wants to understand key relevant performance figures and help managers take corrective actions where appropriate.

What is one reporting option Get Cloudy Consulting should consider?

- A. Case SLA performance report
- B. Sales KPI Dashboard
- C. Opportunity analytic snapshot
- D. Lead conversion rate report

**Answer: (SHOW ANSWER)**

#### **NEW QUESTION: 108**

Universal Containers (UC) is implementing a formal, cross -business -unit data governance program As part of the program, UC will implement a team to make decisions on enterprise -wide data governance. Which two roles are appropriate as members of this team? Choose 2 answers

- A. Operational Data Users
- B. Salesforce Administrators
- C. Data Domain Stewards
- D. Analytics/BI Owners

**Answer: (SHOW ANSWER)**

#### **NEW QUESTION: 109**

NTO need to extract 50 million records from a custom object everyday from its Salesforce org. NTO is facing query timeout issues while extracting these records.

What should a data architect recommend in order to get around the time out issue?

- A. Use ETL tool for extraction of records.
- B. Ask SF support to increase the query timeout value.
- C. The REST API to extract data as it automatically chunks records by 200.

D. Use a custom auto number and formula field and use that to chunk records while extracting data.

**Answer:** ([SHOW ANSWER](#))

**NEW QUESTION: 110**

Universal Containers (UC) is a business that works directly with individual consumers (B2C). They are moving from a current home-grown CRM system to Salesforce. UC has about one million consumer records. What should the architect recommend for optimal use of Salesforce functionality and also to avoid data loading issues?

A. Load one Account record and one Contact record for each individual consumer.

B. Create a Custom Object Individual Consumer c to load all individual consumers.

C. Create one Account and load individual consumers as Contacts linked to that one Account.

D. Load all individual consumers as Account records and avoid using the Contact object.

**Answer:** A ([LEAVE A REPLY](#))

**NEW QUESTION: 111**

Cloud Kicks needs to purge detailed transactional records from Salesforce. The data should be aggregated at a summary level and available in Salesforce.

What are two automated approaches to fulfill this goal? (Choose two.)

A. Third-party Integration Tool (ETL)

B. Third-party Business Intelligence system

C. Apex Triggers

D. Schedulable Batch Apex

**Answer:** A,D ([LEAVE A REPLY](#))

**Valid Data-Architecture-And-Management-Designer Dumps** shared by BraindumpsPass.com for Helping Passing Data-Architecture-And-Management-Designer Exam! BraindumpsPass.com now offer the **newest Data-Architecture-And-Management-Designer exam dumps**, the BraindumpsPass.com Data-Architecture-And-Management-Designer exam **questions have been updated** and **answers have been corrected** get the **newest** BraindumpsPass.com Data-Architecture-And-Management-Designer dumps with Test Engine here:  
<https://www.braindumpsPass.com/Salesforce/Data-Architecture-And-Management-Designer-practice-exam-dumps.html> (224 Q&As Dumps, **40%OFF Special Discount: Exam-Tests**)